



Your update

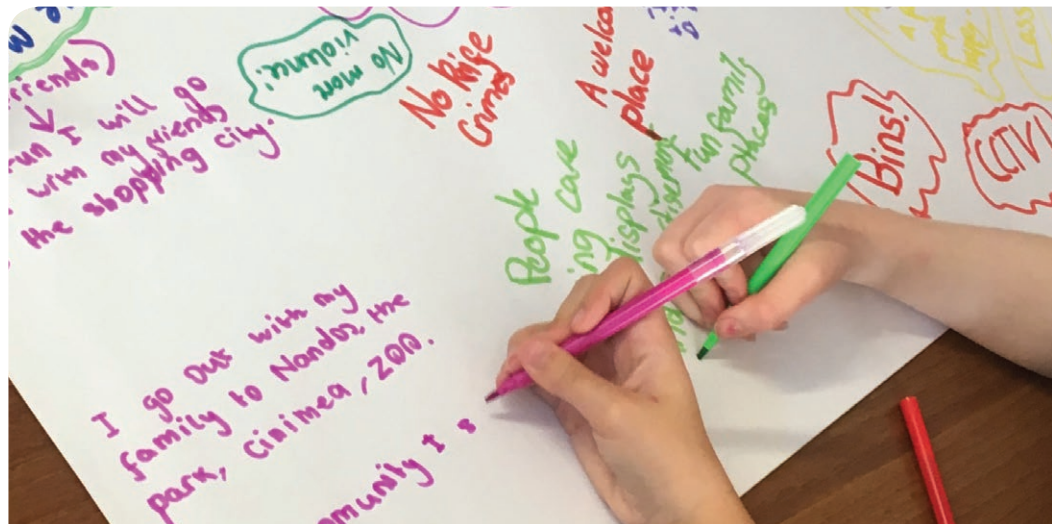
Hallwood Park and Palace Fields Community update: December 2019

Landscaping update

Landscaping improvements will commence in the New Year following your feedback. We're now in the process of developing a Landscaping Strategy using the information you provided and will be addressing the concerns you identified – see [page 4](#) for more details.



Hallwood Park and Palace Fields Area Renewal Plan



Thank you to everyone who has been involved in the development of the Hallwood Park and Palace Fields Area Renewal Plan.

We have been working with you – our residents, community groups, partners and consultants over the past six months to develop a neighbourhood plan for the whole community of Hallwood Park and Palace Fields.

We have really enjoyed speaking with you and look forward to working with you a lot more in the coming months and years to further refine and deliver these projects. As you can see above the pupils at St Chad's were full of ideas.

The 10 year plan is now being finalised following two stages of community consultation and includes a range of projects chosen by you, which will support your neighbourhoods to grow. [More about this on page 2](#)

Your projects – your way

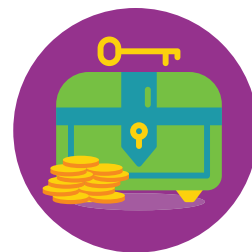


You told us about a number of issues during our engagement sessions.

We have worked together to identify projects to tackle these issues, which include the following:

You told us...	So we will...
You wanted the Tricorn buildings brought back into use and wanted a better local hub for your area.	Look at creating a new local hub with the right shops and community spaces and explore the role of the Tricorn buildings in this.
You wanted better housing choices and didn't like The Knoll flats in The Uplands.	Deliver new homes in the right places and help people onto the property ladder as well as explore options for The Knoll flats.
You wanted better connections from Hallwood Park to Palace Fields and back.	Work with the NHS Trust to explore creating better road and walking links across the two areas.
You wanted better, safer ways to get to Shopping City and areas around it.	Work with Shopping City and Halton Borough Council to explore safe walking and cycling routes.
You wanted walking and cycling on the busway to travel the shortest distances.	Work with partners to explore having safe walking and cycling on the busway.
There are a number of community safety issues surrounding housing estates especially in land that is not overlooked.	Work with partners to tackle these issues and look at building new homes in the right places to tackle persistent safety issues.
You wanted to close the subways, as you did not feel safe using them.	Work with partners to close the subways only once dedicated safe pedestrian crossings are created to replace them.
You find it difficult to get around the estates, particularly if you are new, because there are no signs.	Improve and replace existing signs to help people get around the estates and for people to find houses more easily.

Community Chest Fund Update



Community projects already bringing great benefits to people

Riverside's Hallwood Park and Palace Fields Community Chest Fund received a fantastic number of applications from community groups, residents and local schools to deliver local projects in the area. These projects will make a change to those most in need in Hallwood Park and Palace Fields.

Some projects have been delivered already including environmental improvements to the car park beside Bethesda Church, sewing sessions with Sew Halton and Summer of Fun sessions at Palace Fields Community Centre with Four Estates.



Before



After

Coming up...

There are a number of other projects planned for the coming months.



Play sessions (lasting two and a half hours) for children aged between 5-12 years during February half-term and Easter holidays costing £1. Please contact Halton Play Council if interested. There is also a link on the Runcorn page of our website.

Improve your skills by joining a 16-week project (two hours per week) looking at IT skills, money advice and starting on the path to employment. Contact Open360 if you are interested. There is also a link on the Runcorn page of our website.

We will be inviting applications in 2020 for a further £50,000 Community Chest fund. We will let you know when this opens.

If you have a project idea we would love to hear from you and we would be happy to discuss and support you in your future funding applications.

To find out more about the above projects and wider Community Chest Fund, please visit: www.riverside.org.uk/haltonlea

Landscaping Update



A large number of residents expressed concerns with the current landscaping in Hallwood Park and Palace Fields.

We're now in the process of developing a Landscaping Strategy using the information you provided and will be addressing the concerns you identified such as:

- Improving visibility along footpaths and roads by cutting back or removing overgrown hedges to make the area safer.
- Improving access to back gardens surrounding Palace Fields woodland where there are currently steps to back gates.
- Improving signage to help people find their way around communities.
- Improving the local centre in the short term while you work with us to develop long-term plans for this area.
- Improving the Palace Fields woodland area to make the space more useable by everyone in the community.



How to get involved and find out more

Delivery of the Plan – now the projects have been chosen, they will need to be designed before any of them can be delivered. There are a number of projects that will start soon, including the landscaping improvements, Community Chest Fund initiatives along with way-finding and signage. Some of the larger projects will take longer to implement.

Engagement – In Spring we'll be holding a series of drop-in sessions where you can come and see the final plan you have chosen. We would very much like you to be

involved in the next stage of designing the projects and at these sessions we'll be showing you how to take part.

Website – we'll shortly be relaunching our dedicated webpage for the Area Renewal Plan. This will be a one stop shop of information on the plan including regular news updates and opportunities for you to get involved.

Check out the website in the New Year for all the information you need on the plan:

www.riverside.org.uk/haltonlea



How to get in touch:

If you have any queries, please call our Customer Service Centre on **0345 111 0000**

E-mail – **hp.pf.enquiry@riverside.org.uk**

Post – **Hallwood Park & Palace Fields Renewal Plan, Strategy & Planning, Riverside, 2 Estuary Boulevard, Estuary Commerce Park, Liverpool, L24 8RF**

