



Your update

PLANNING FOR THE REDEVELOPMENT OF CALVERLEY CLOSE

STAYING SAFE DURING COVID-19

As always, the safety of our residents, staff and partners remains a top priority.

Due to the latest government guidelines we do not feel it appropriate at this stage to undertake face to face consultation events and so we will be holding a series of online consultations to keep residents updated and informed. If you don't have internet access please contact your RLO to discuss an alternative.

Finally, we would also like to remind tenants to stay safe and continue following the latest guidance and government advice.

PLANNING FOR THE REDEVELOPMENT OF CALVERLEY CLOSE

Since we wrote to you in the summer with an update on the outcomes of the options appraisal process, we have been continuing our discussions with Countryside Properties. We recognise that there have been some delays in taking this forward and apologise for this.

The pandemic, a restructure of the Countryside team and awaiting feedback from Bromley Council, has impacted on progression of the design and consultation work.

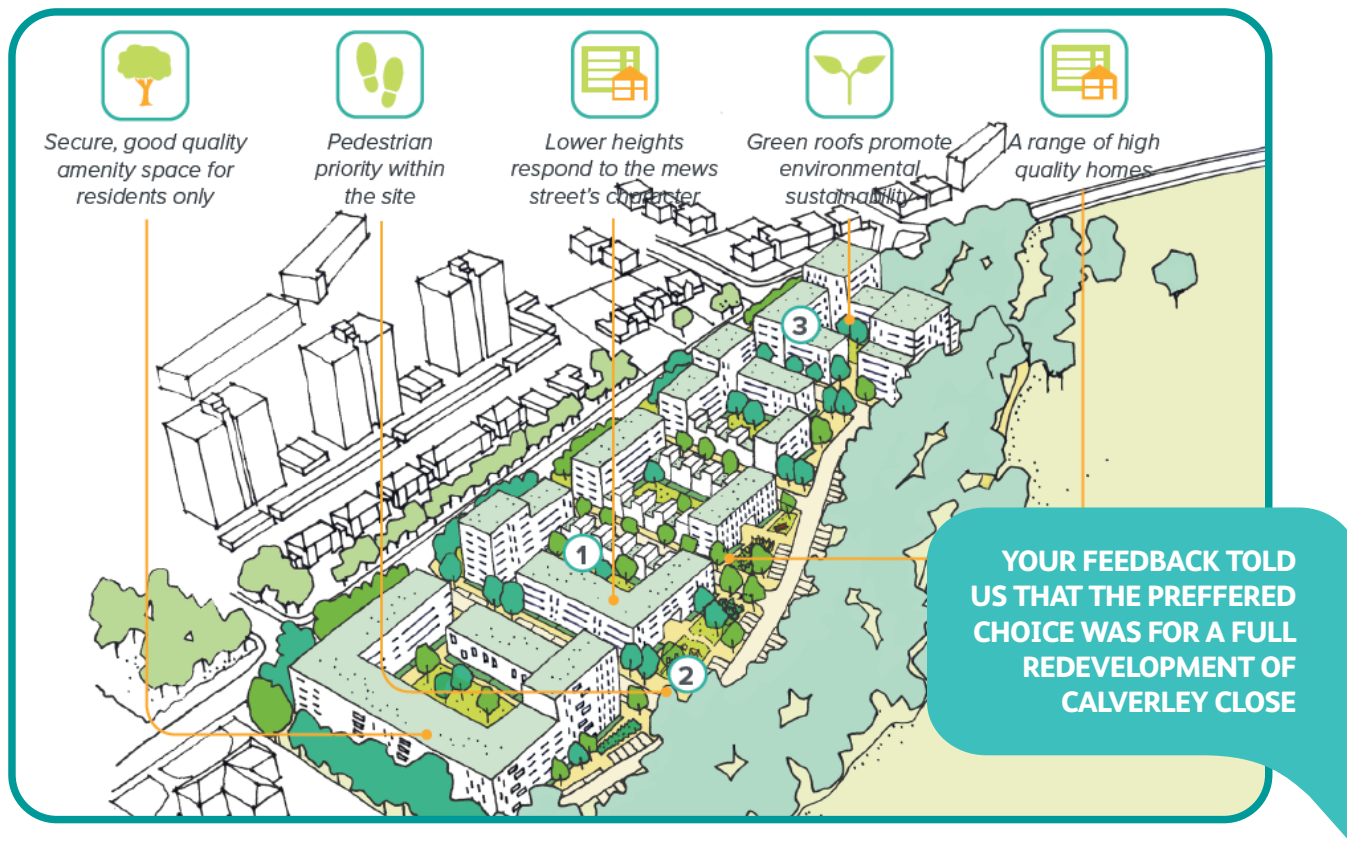
READ MORE ABOUT THIS INSIDE.



IN THIS ISSUE...

- An update - where are we now?
- Riverside team updates
- Next steps

NEWS ON THE BLOCK



HTA ARCHITECTS TO CONTINUE WITH DESIGNS

We are pleased to announce that HTA will be recommencing as lead appointed project architect and will be taking forward the scheme that Levitt Bernstein presented to you early last year.

HTA are developing proposals that we can consult with you on over the coming month. Details of the event will be sent to you in due course, and will be the start of a series of consultation events leading up to ballot.

WHERE WE ARE WITH PLANNING?

Following our pre app meeting with Bromley Council last year, we aim to meet with them again this Spring to review the scheme, particularly around the number of homes and seek their clarification on their requirement for Warner House.

TEAM UPDATES

MEET NATHAN

We caught up with Nathan Gravesande who has taken on the role of London Redevelopment Director at Riverside

MY BACKGROUND

I've worked in Housing for over 25 years, at both senior officer and Director levels. In my last role I led a major inner city regeneration project in London for one of the largest Housing Associations. I saw the benefits of regeneration up close and personal on a daily basis and when I left the project we had created up to some 500 homes for local people in one of the most deprived wards of the Borough.



MY 2021 GOALS/HOPES FOR CALVERLEY CLOSE

The creation of a sustainable community with excellent homes for our tenants and those to come. The focus is to ensure this is achieved with full consultation, with a clear vision of, what at times, can be a tricky journey, but will be very worthwhile once complete.

LOCKDOWN SURVIVAL KIT

I maintain my wellbeing by taking daily walks and having an evening training regime - now every other day I must confess! On Sundays I do boxercise, which I highly enjoy. This sets me up for the new week.

Welcome to Jade Adnett, Resident Liaison Officer, Sami Rahman, Senior Communications Officer and Belinda Stewart, Housing Services Manager.

TEAM UPDATES



Sami Rahman



Jade Adnett



Belinda Stewart

WHAT'S NEXT?

Our next steps are to work up a consultation timetable in the lead up to a formal Resident Offer that would be followed by a resident ballot, where residents can cast their vote for a full redevelopment of Calverley Close. This will take place after further consultation and engagement with you, and is anticipated to happen in summer 2021.

Alongside the onboarding of the new Countryside team, we have been in contact with the planning team at Bromley Council to talk about the future of Warner House, and, in particular the possible reprovision of the sheltered accommodation.

YOU TELL US!

TAKE PART IN OUR SHORT SURVEY AND TELL US HOW BEST TO COMMUNICATE WITH YOU DURING COVID

VISIT: WWW.BIT.LY/3BEP40U

GUARDIANS - AN UPDATE

As demand for flats in Beckenham grows LOWE have enforced their key worker hierarchy and recently gave priority to a Project Manager working for the NHS to move into a void flat.

STAY IN TOUCH

RESIDENT LIAISON OFFICER - MANDY RANA

 07980 761482

 calverley@riverside.org.uk

 www.riverside.com/calverley

INDEPENDANT TENANT ADVISORS CAROL SQUIRES & ROB WILLIAMS

 0800 616 328

 carol@sourcepartnership.com
rob@sourcepartnership.com

 www.sourcepartnership.com