

Pike Close

○ Bromley ○

Masterplan

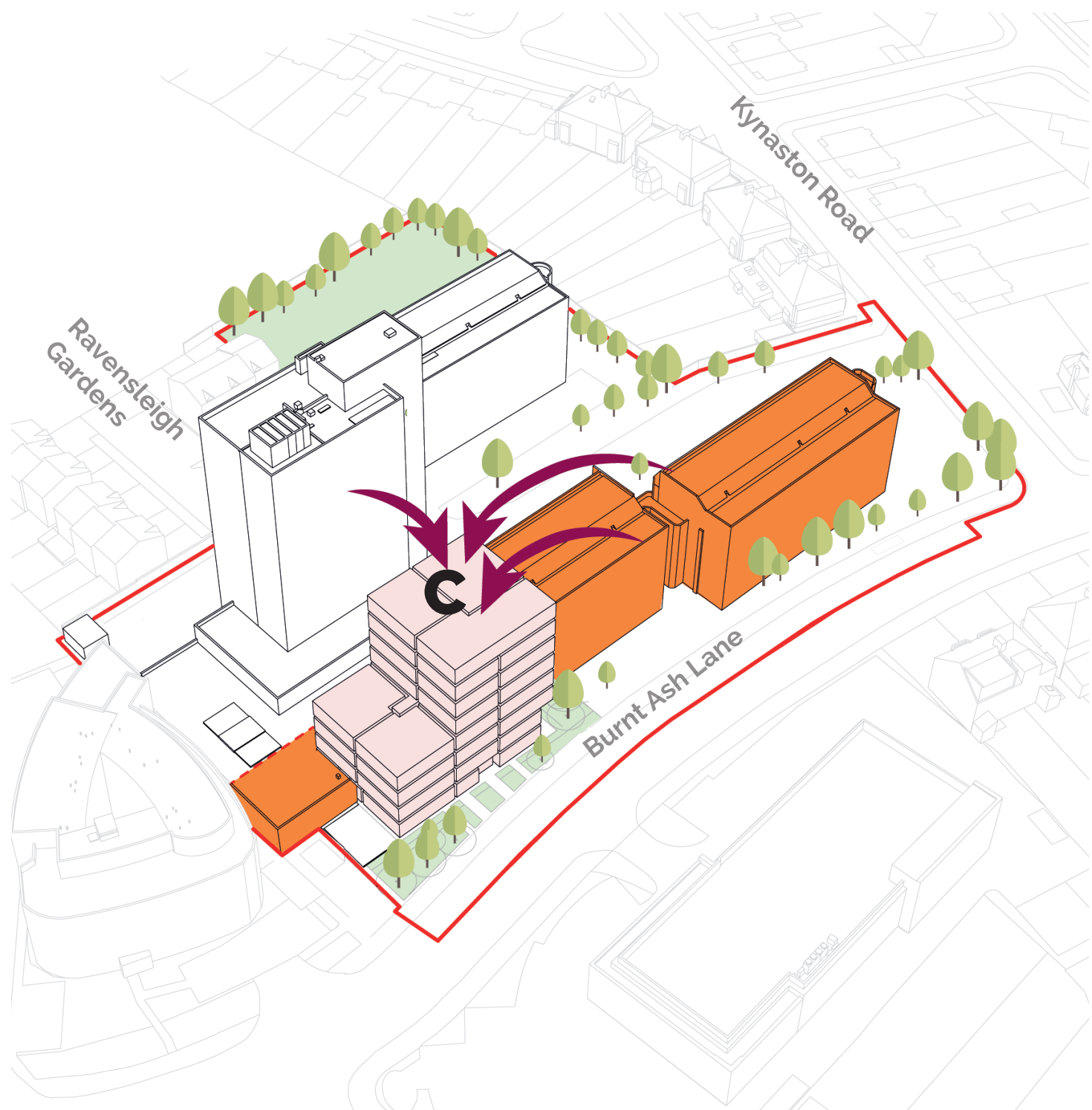


- Affordable/social rent
- Private sale
- 1 Play space
- 2 Pocket park
- 3 Central square
- 4 Parking

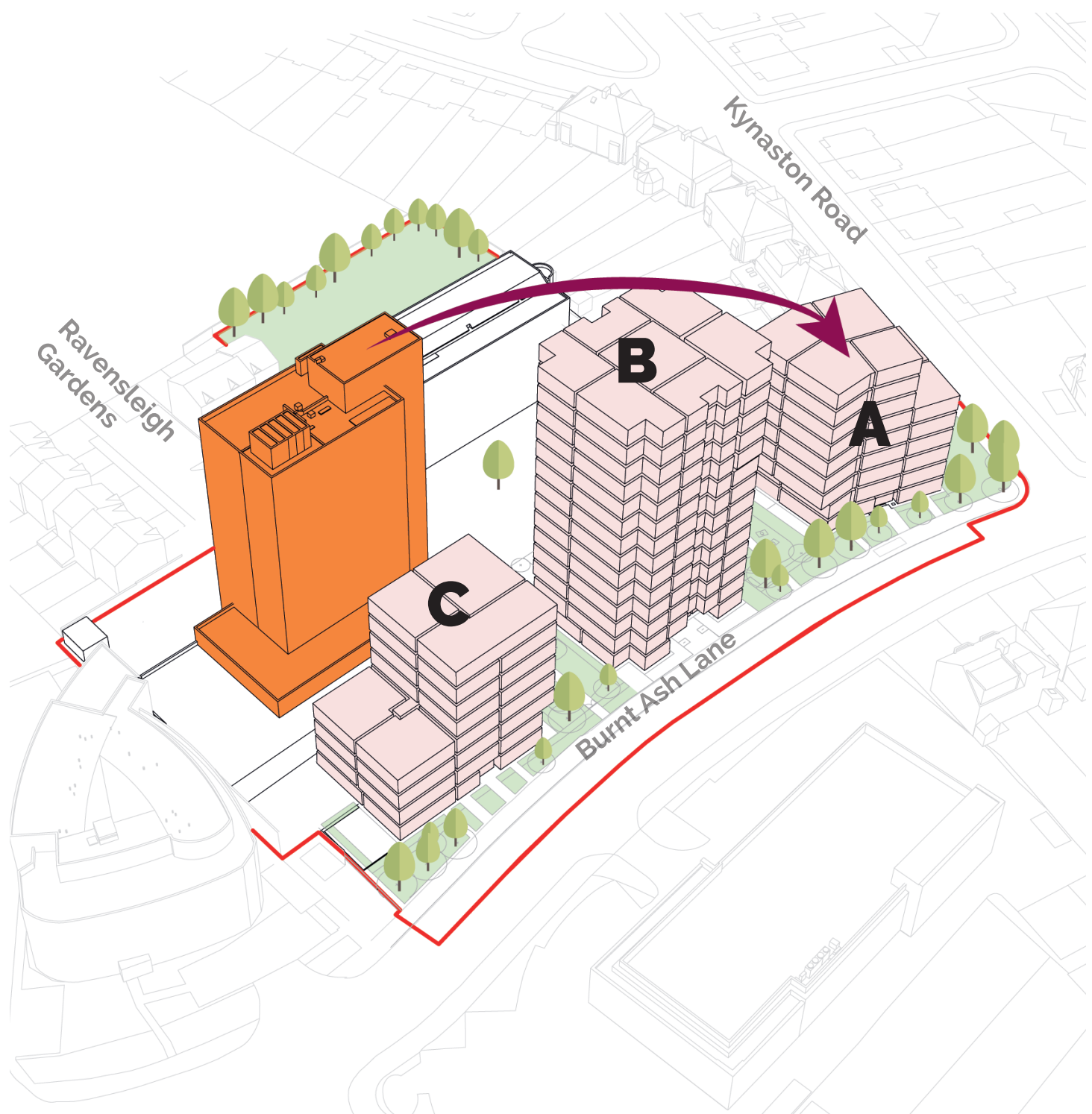
Pike Close

○ Bromley ○

Updated Phasing Strategy



Phase 1: Build Block C.
Decant Mede, Wells and part of Burnt Ash Heights.



Phase 2: Demolish Mede and Wells, Build Blocks A and B.
Decant remaining Burnt Ash Heights to Block A.



Phase 3: Demolish Burnt Ash Heights and Build Block E.
Decant Lavisham.





Phase 4: Build terraced housing, construct central square

DESIGN CHANGES SINCE WE LAST MET:

- 1 Two additional floors on Block D.
- 2 One additional floor on Block C.
- 3 Block A remains the same height, however the step begins one floor lower.

These changes have been made in response to planner's feedback.

-  Building to be demolished
-  Building to be constructed

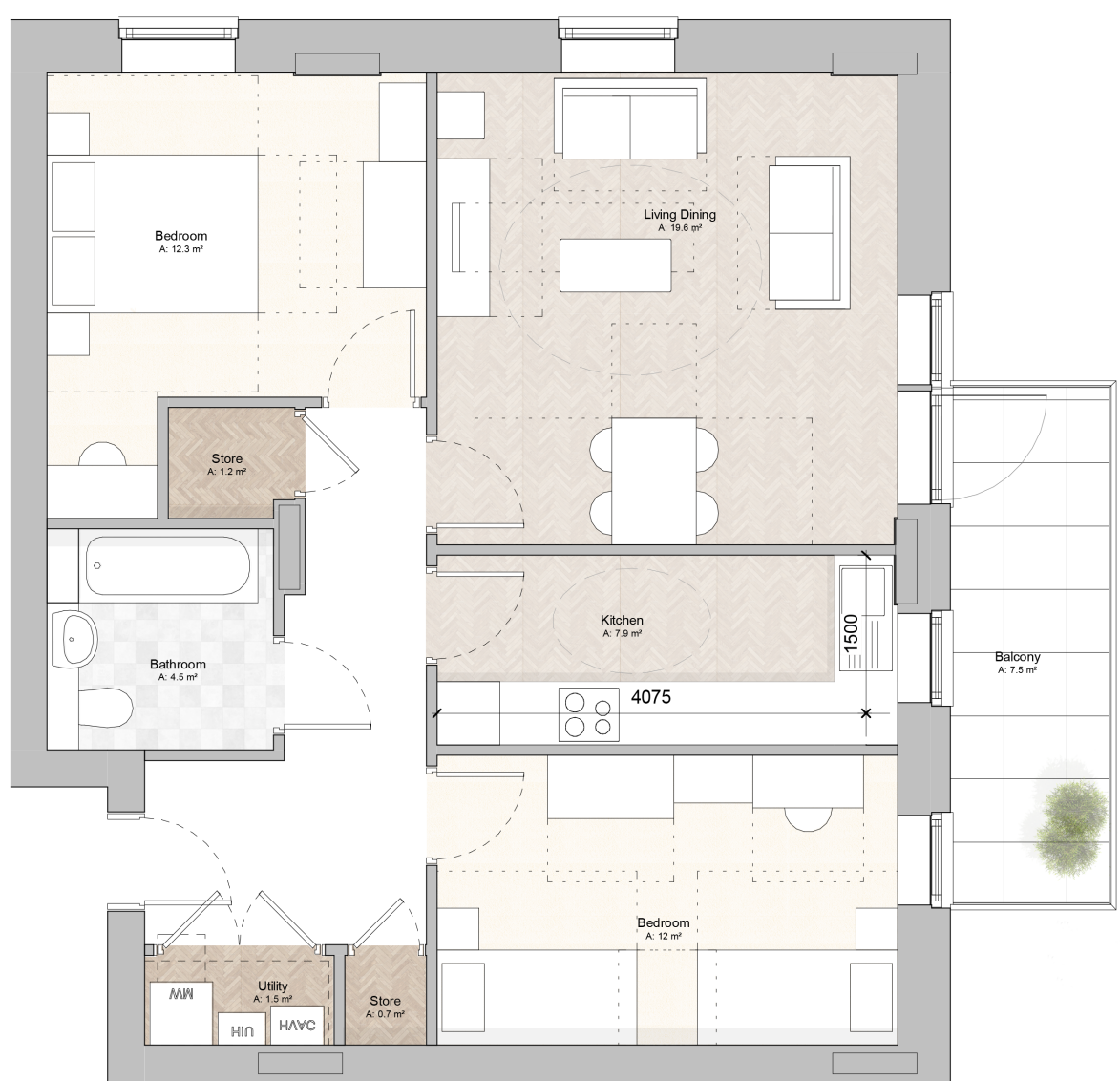
Pike Close

○ Bromley ○

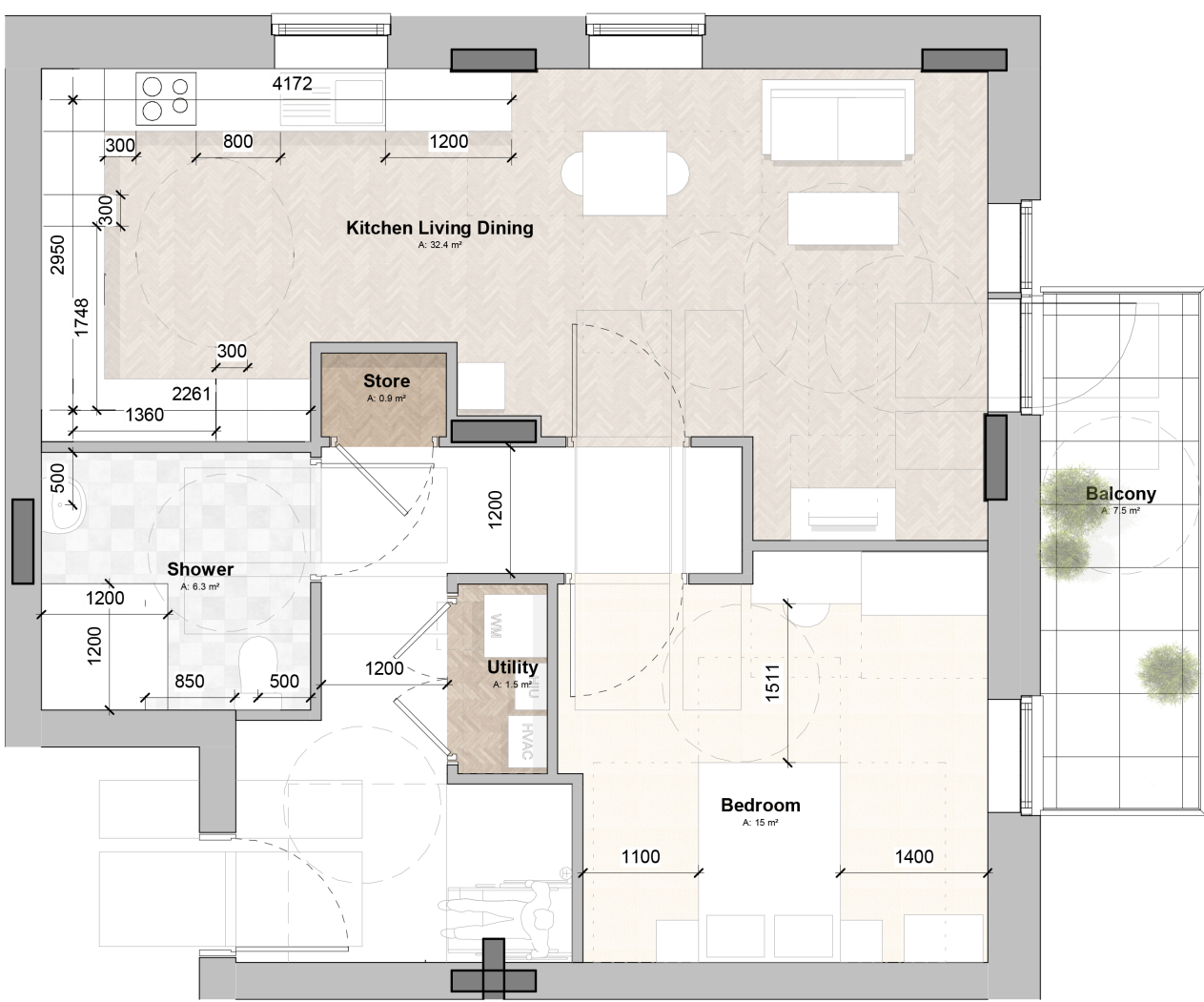
Accessible Homes



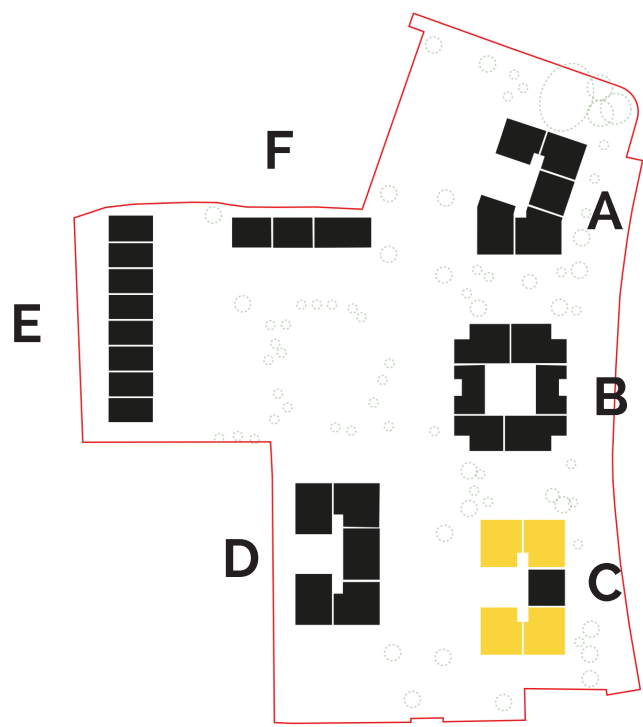
- 1b2p wch a/s rent
- 1b2p wch private sale
- 2b4p wch a/s rent
- 3b5p wch a/s rent
- 4b6p wch a/s rent



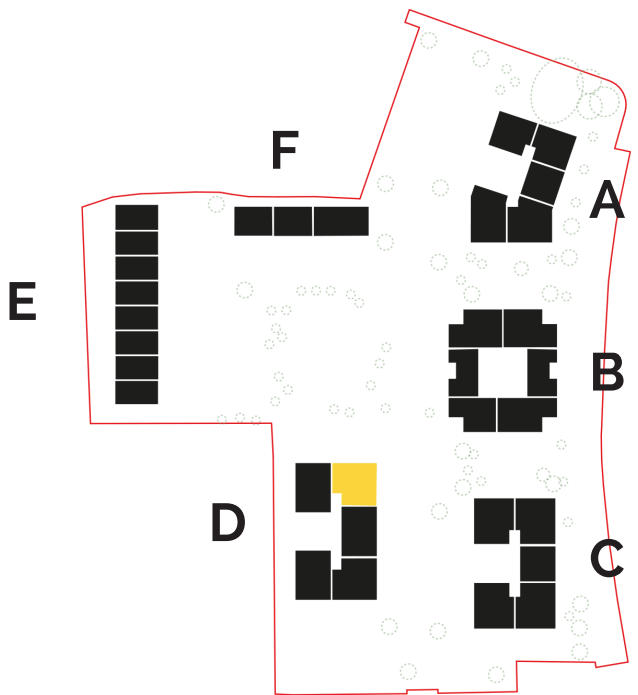
2 bed 4 person flat -
affordable/social rent -Type 3 (74 sqm)



1 bed 2 person wheelchair accessible flat -
affordable/social rent-Type 1 (56 sqm)



Location of 2 bed 4 person flat -
affordable/social rent -Type 3

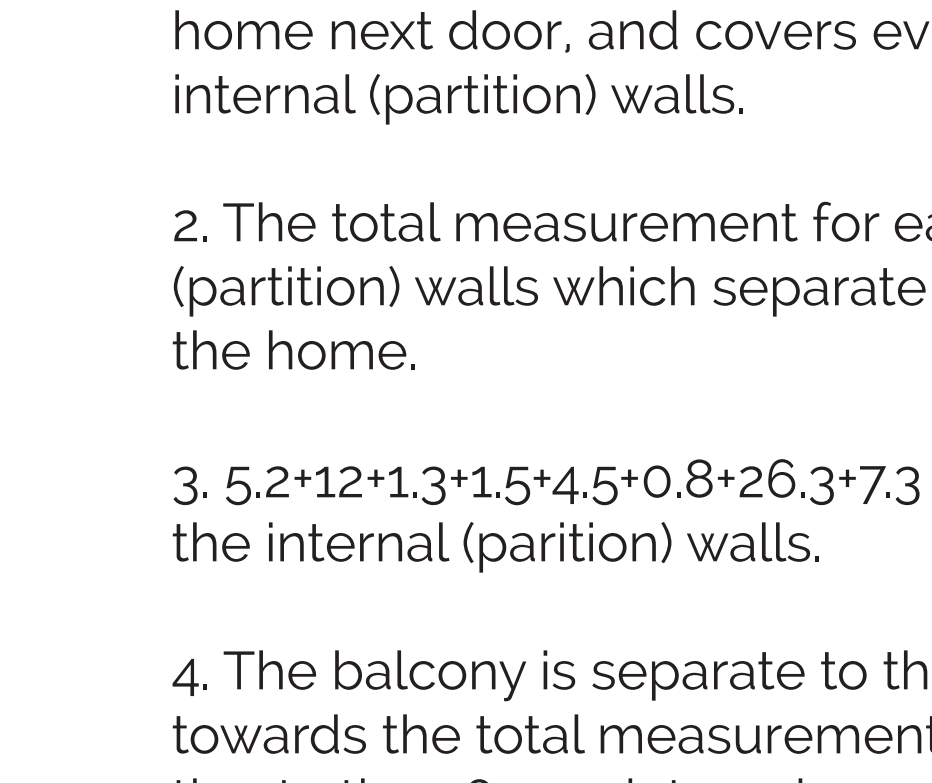
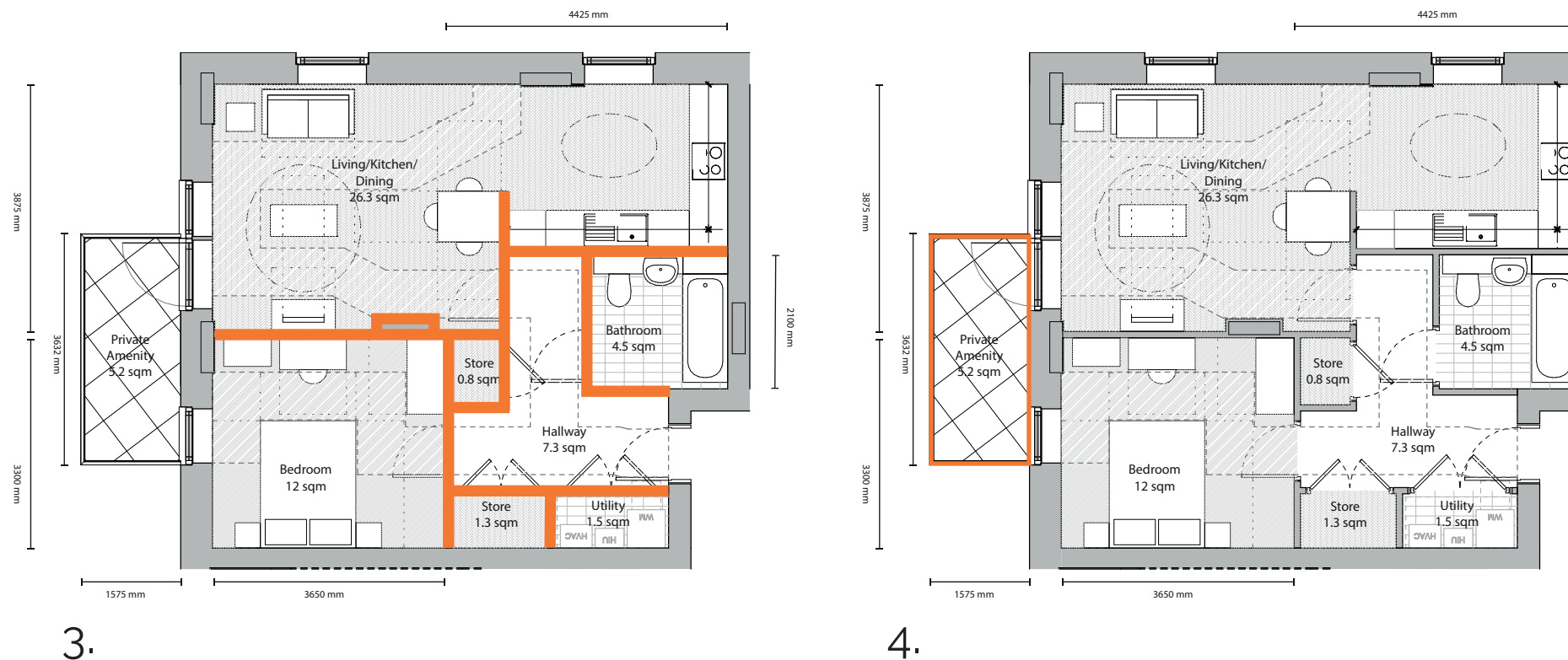
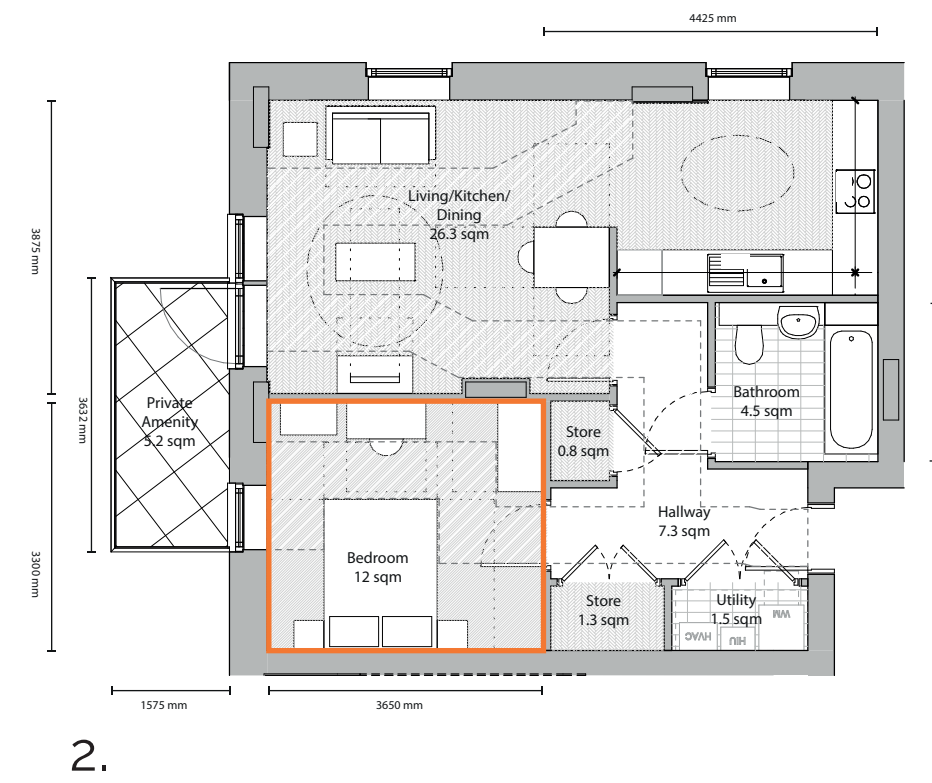
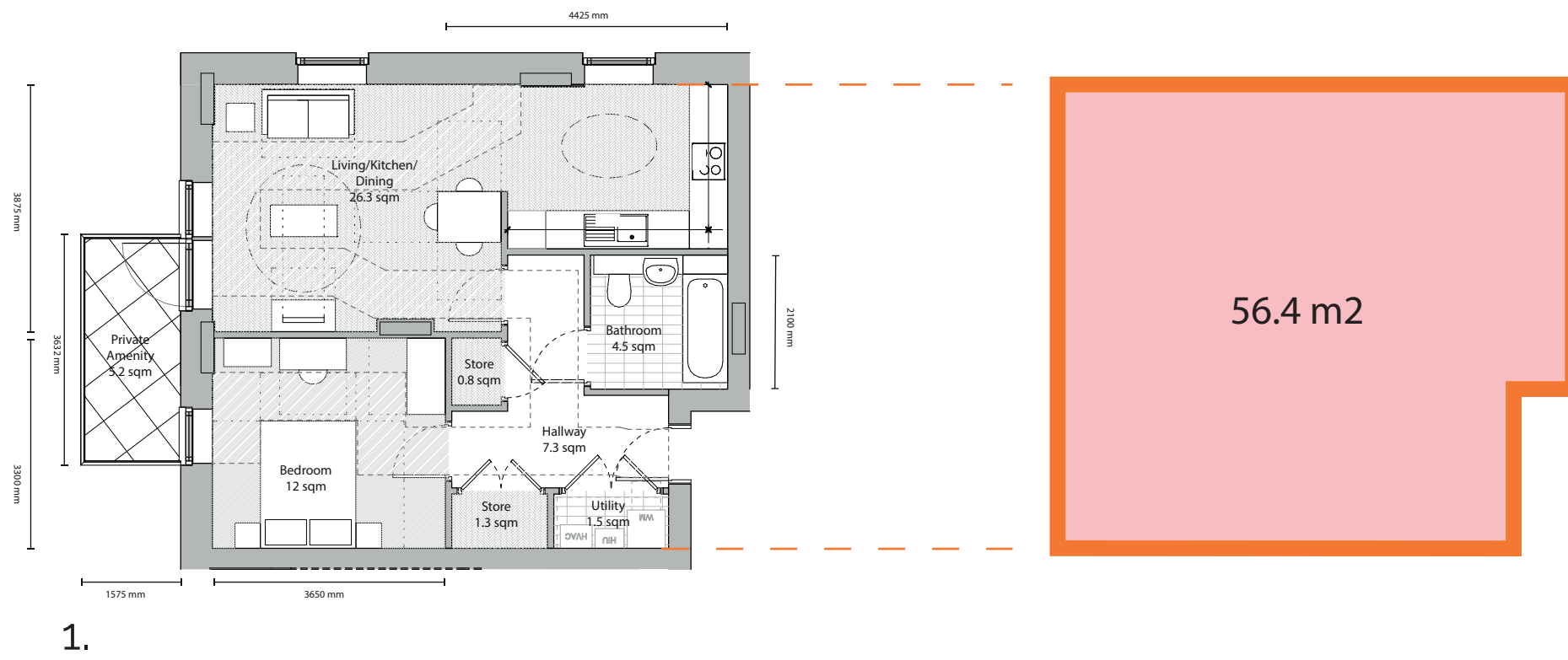


Location of 1 bed 2 person flat -
affordable/social rent -Type 1

Pike Close

○ Bromley ○

New Homes



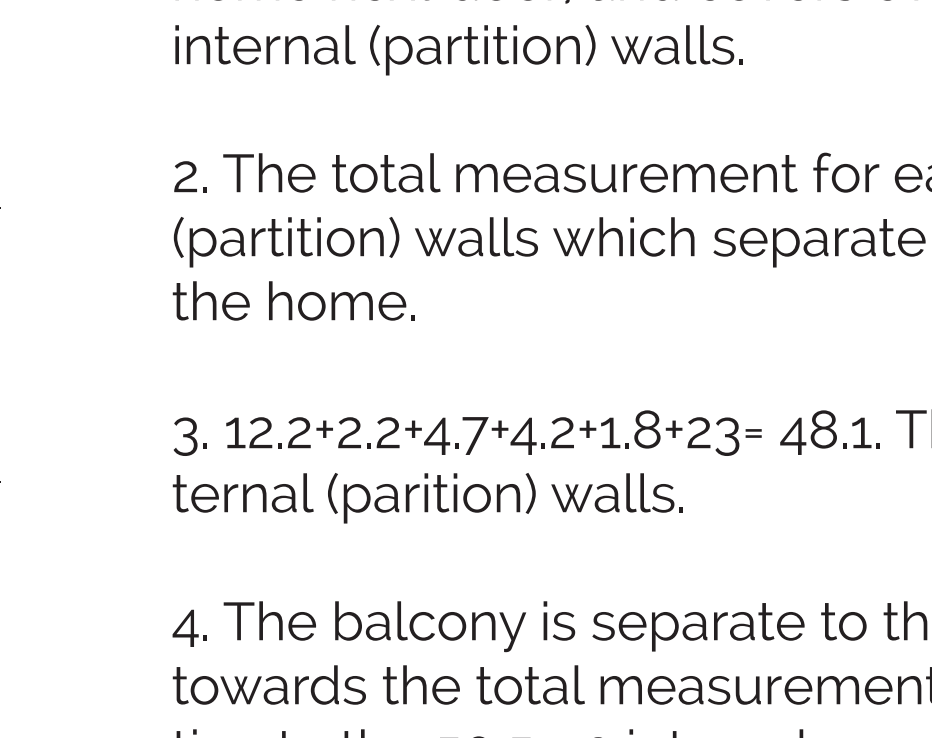
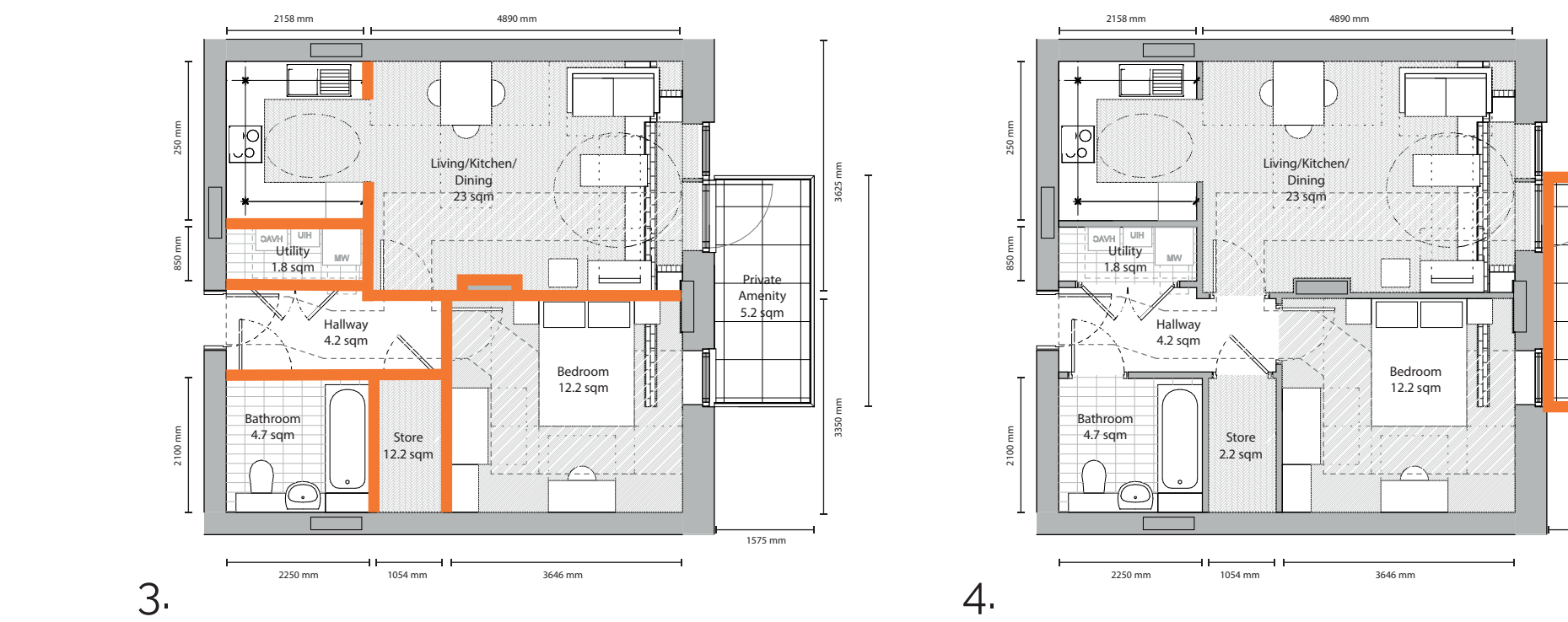
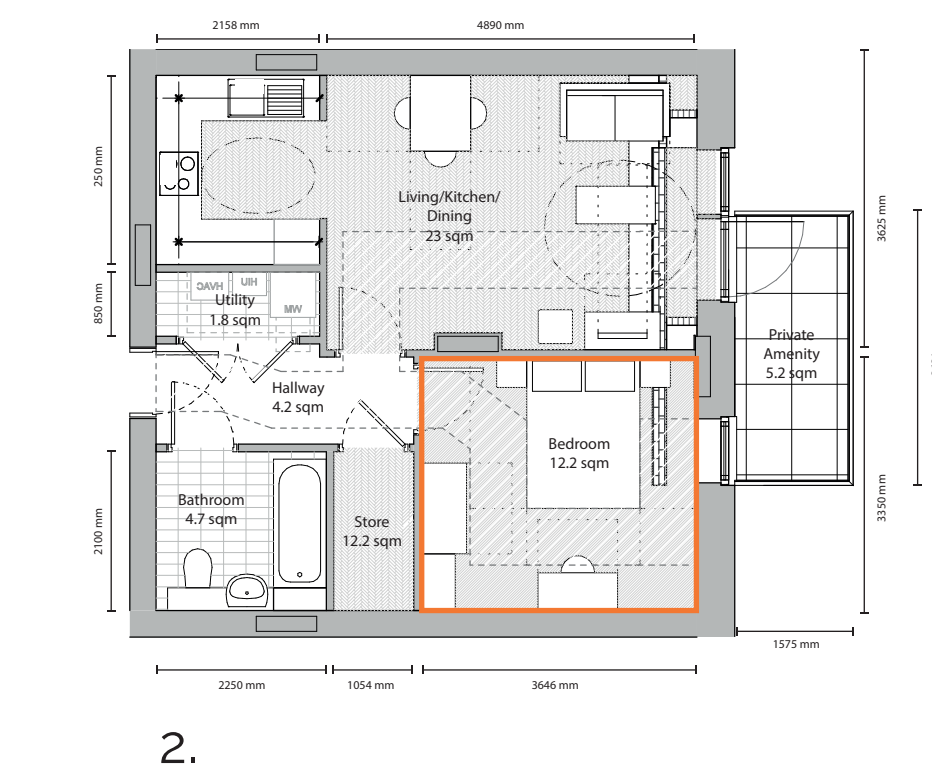
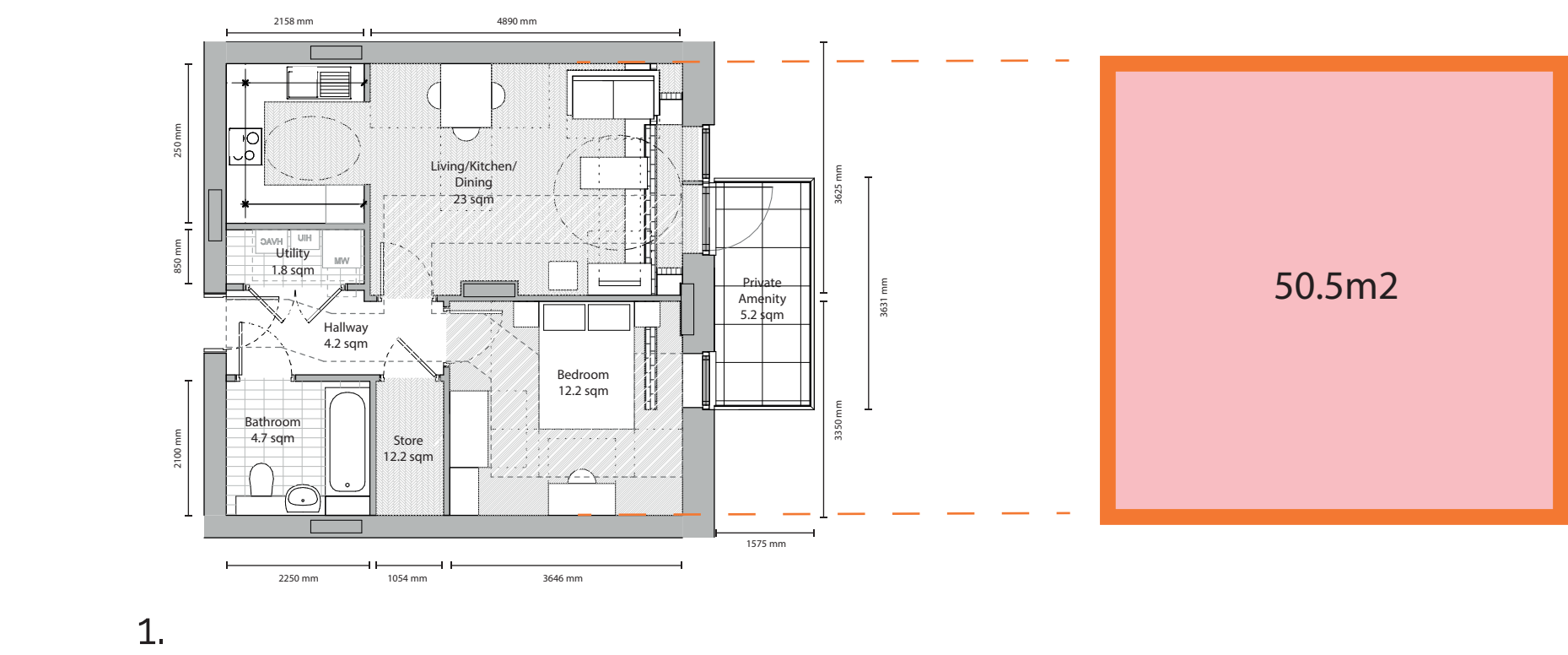
1. The total measurement of the home is taken from measuring round the inside of the (structural) walls which separate it from the home from the home next door, and covers everything within this boundary - including internal (partition) walls.

2. The total measurement for each room is taken from the inside of the (partition) walls which separate the room from the room next door within the home.

3. $5.2 + 12 + 1.3 + 1.5 + 4.5 + 0.8 + 26.3 + 7.3 = 53.7$. The remaining 2.7m² is taken up by the internal (partition) walls.

4. The balcony is separate to the total unit measurement and not counted towards the total measurement of the home. This provides 5.2m² in addition to the 56.4m² internal measurement.

TYPICAL OVERSIZED 1B2P FLAT



1. The total measurement of the home is taken from measuring round the inside of the (structural) walls which separate it from the home from the home next door, and covers everything within this boundary - including internal (partition) walls.

2. The total measurement for each room is taken from the inside of the (partition) walls which separate the room from the room next door within the home.

3. $12.2 + 2.2 + 4.7 + 4.2 + 1.8 + 23 = 48.1$. The remaining 2.4m² is taken up by the internal (partition) walls.

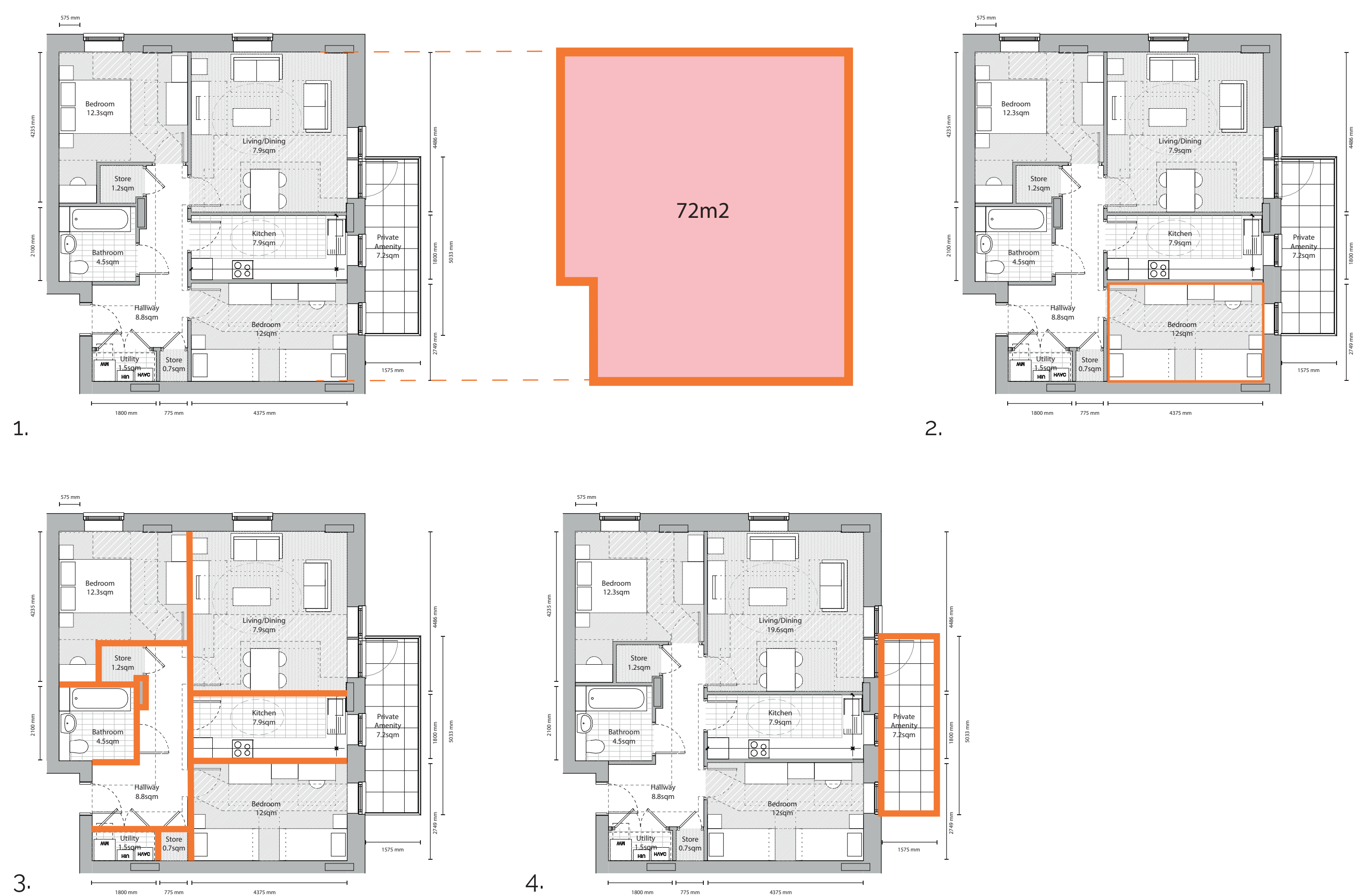
4. The balcony is separate to the total unit measurement and not counted towards the total measurement of the home. This provides 5.2m² in addition to the 50.5m² internal measurement.

TYPICAL 1B2P FLAT

Pike Close

○ Bromley ○

New Homes



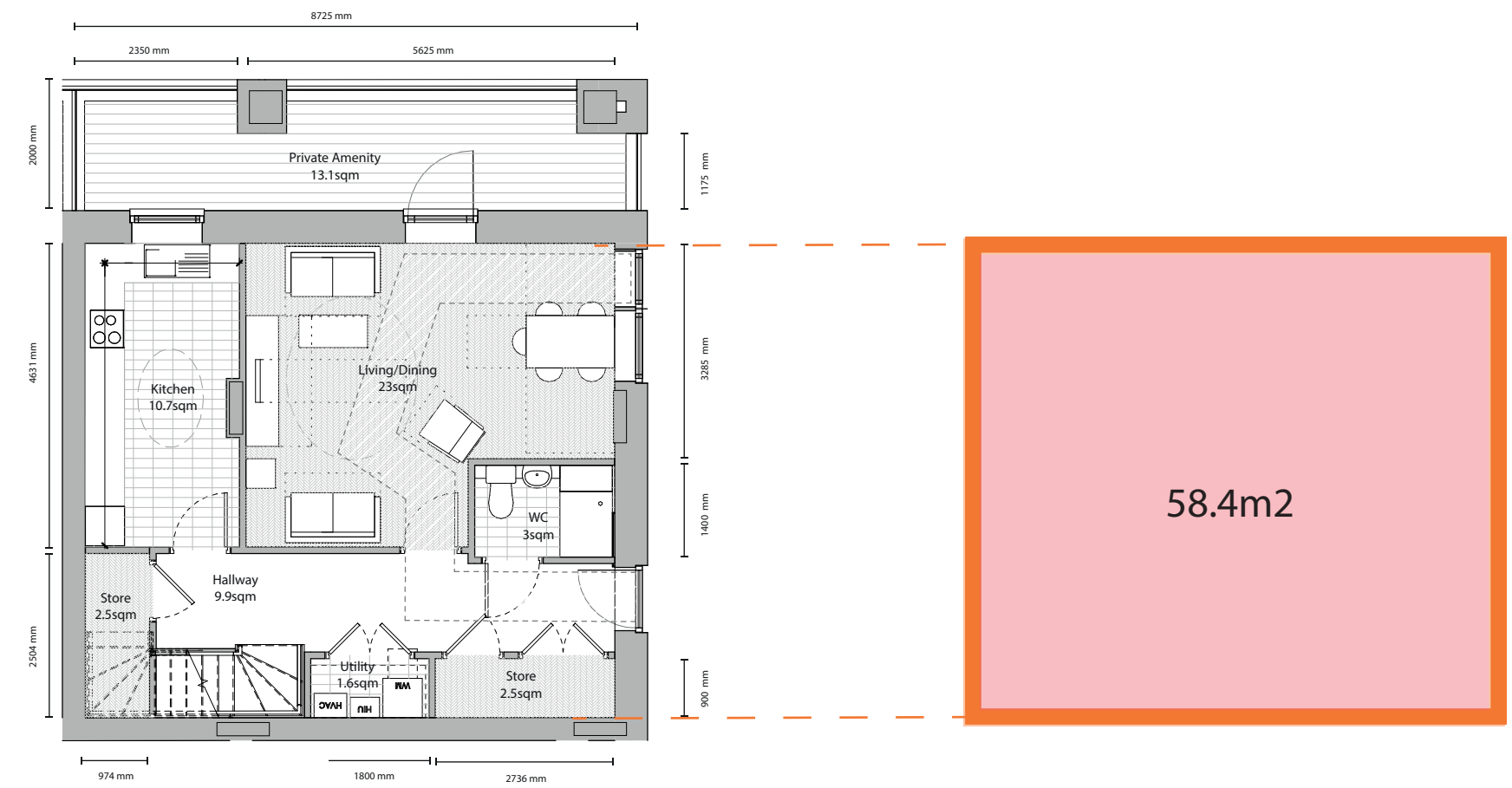
TYPICAL 2B4P FLAT

1. The total measurement of the home is taken from measuring round the inside of the (structural) walls which separate it from the home from the home next door, and covers everything within this boundary - including internal (partition) walls.
2. The total measurement for each room is taken from the inside of the (partition) walls which separate the room from the room next door within the home.
3. $12.3+1.2+4.5+19.6+7.9+12+1.5+0.7+8.8= 68.5$. The remaining 3.5m² is taken up by the internal (partition) walls.
4. The balcony is separate to the total unit measurement and not counted towards the total measurement of the home. This provides 7.2m² in addition to the 72m² internal measurement.

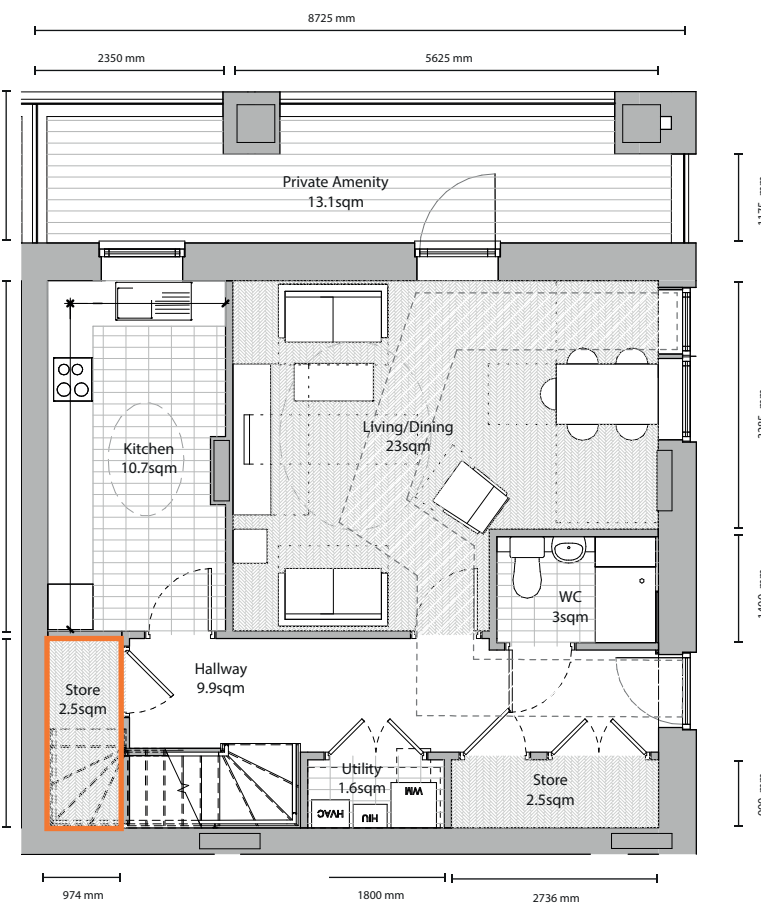
Pike Close

o Bromley o

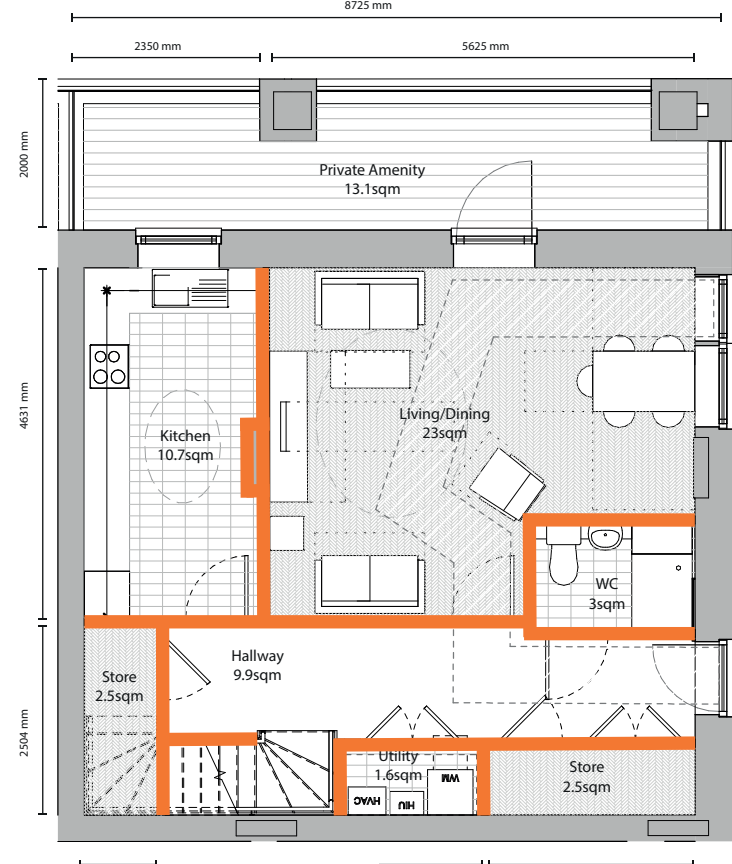
New Homes



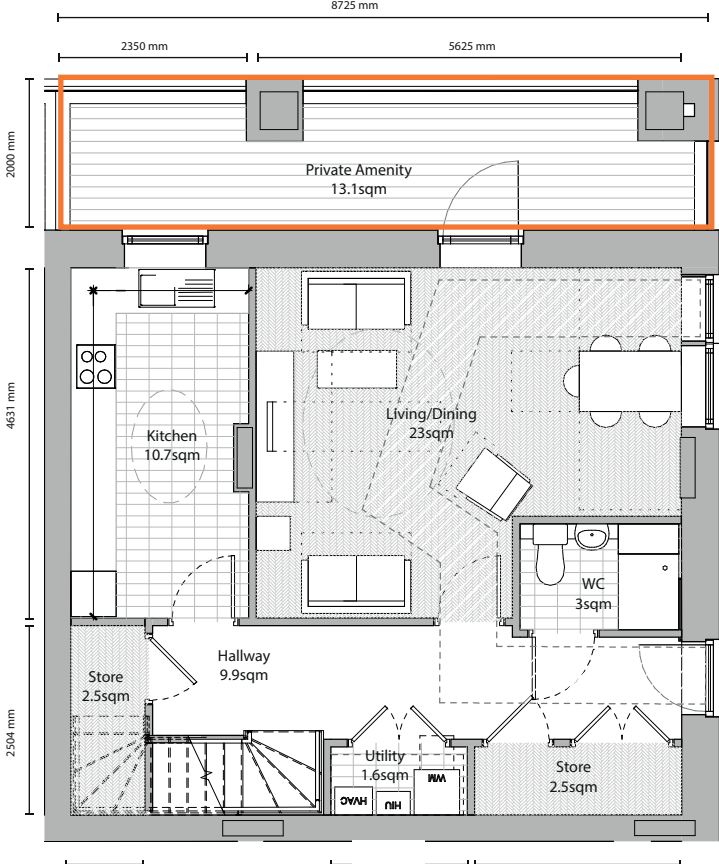
1.



2.



3.



4.

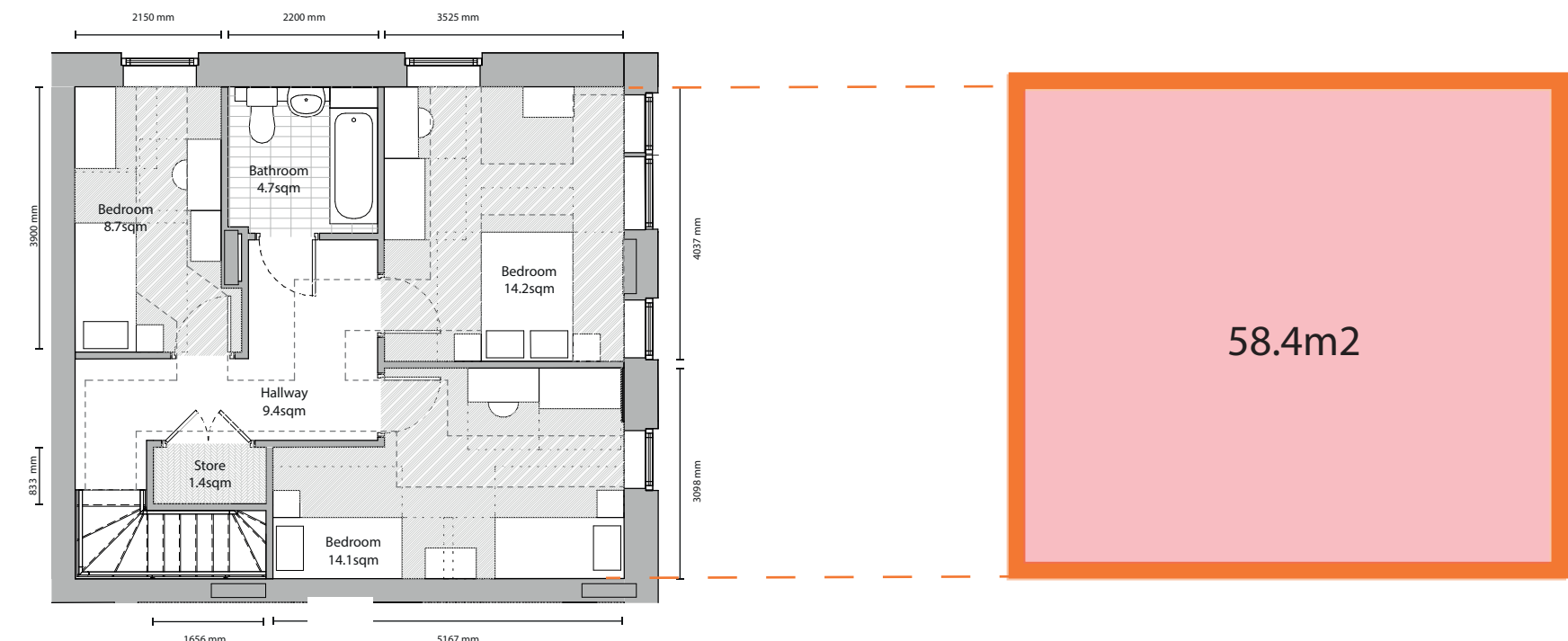
1. The total measurement of the home is taken from measuring round the inside of the (structural) walls which separate it from the home from the home next door, and covers everything within this boundary - including internal (partition) walls.

2. The total measurement for each room is taken from the inside of the (partition) walls which separate the room from the room next door within the home.

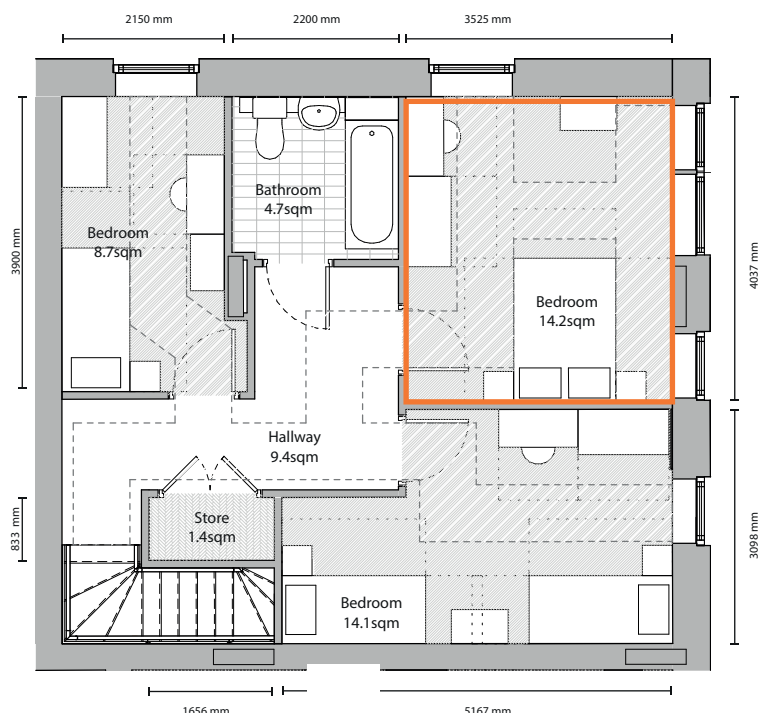
3. $10.7+23+3+9.9+2.5+1.6+2.5= 53.2$. The remaining 5.2m² is taken up by the internal (partition) walls.

4. The garden measurement is separate to the total unit measurement and not counted towards the total measurement of the home. This provides 13.1m² in addition to the 58.4m² internal measurement.

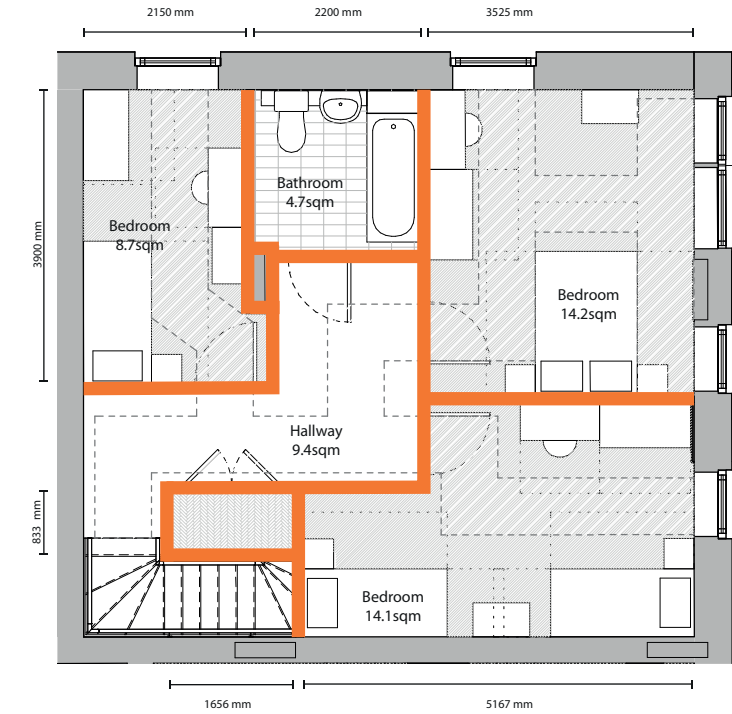
TYPICAL 3B5P MAISONETTE - GROUND FLOOR



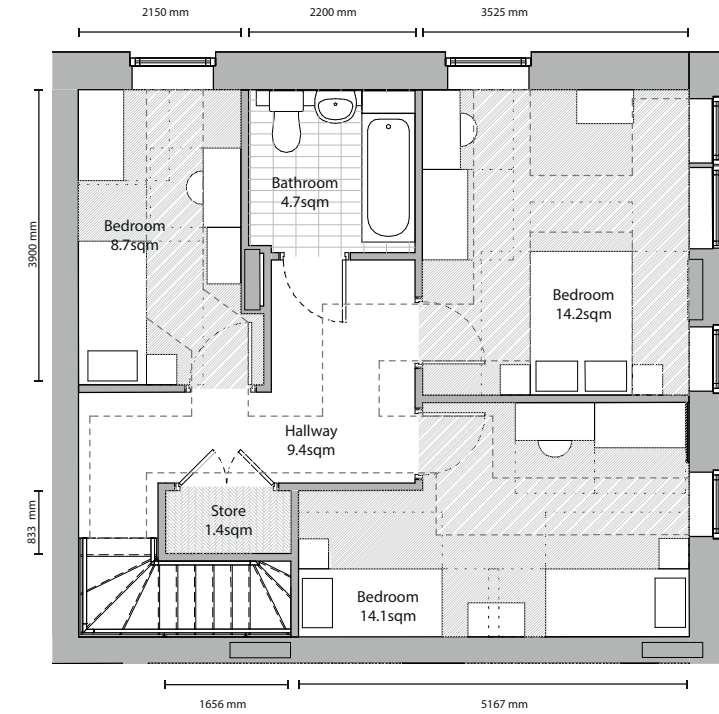
1.



2.



3.



1. The total measurement of the home is taken from measuring round the inside of the (structural) walls which separate it from the home from the home next door, and covers everything within this boundary - including internal (partition) walls.

2. The total measurement for each room is taken from the inside of the (partition) walls which separate the room from the room next door within the home

3. $8.7+4.7+14.1+14.2+1.4+9.4 = 52.5$. The remaining 5.9 m² is taken up by the internal (partition) walls.

TYPICAL 3B5P MAISONETTE - FIRST FLOOR