

# RESIDENT CHARTER, RIVERSIDE COMMITMENTS - YOUR VOTE MATTERS!

## Riverside Commitments

- A home to meet your housing needs
- Everyone has the right to return
- Support when moving to your temporary home and when moving into your new home
- Existing rent levels will remain the same
- You will be compensated at least £7,100 for moving
- Commitment to building high quality new homes
- Riverside will remain your landlord



## HOW WILL THE REDEVELOPMENT BENEFIT YOU?

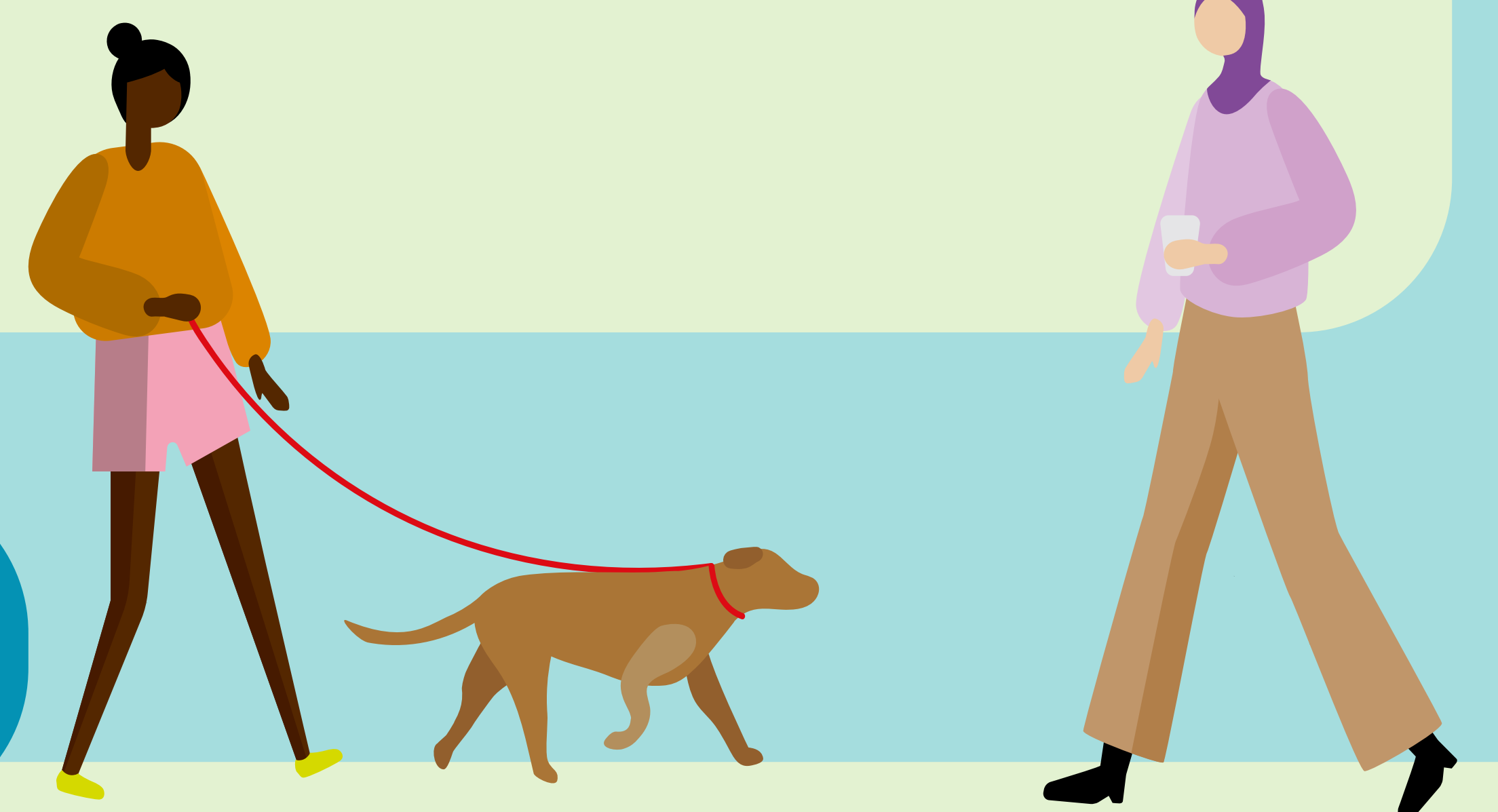
### Improved health and wellbeing:

- Building quality homes to meet the needs of you and your family
- Alleviating overcrowding, providing more rooms to play, study, grow and privacy
- Creating private outdoor space for every home
- Improving amenity and play space



### Improved quality of homes

- More accessible homes on one level and lifts to every floor
- Better storage, kitchens and bathrooms
- More energy efficient
- Quieter homes



### Improved security

- Well lit overlooked walkways, entrances, pathways and communal spaces
- Secure fob access
- Concierge





# YOUR VOTE MATTERS!



## 1ST STAGE March 14th - 25th

your vote will help strengthen our discussions with Southwark planners

You will be asked to vote on the principle of the redevelopment. We will ask you to vote YES or NO to the question "Are you supportive of Friar's Close/Burrell Street being redeveloped?"



## Spring/Summer 2022

Resident design workshops, get involved and help shape the design proposals.



## 2ND STAGE Autumn/Winter 22

Your vote will help strengthen the planning application



You will be asked to vote on the design of the scheme that we will be submitting as part of the planning application to Southwark Council. You will be asked to vote YES or NO to the question "Are you supportive of the new scheme proposals?"

## FAQ's

### Who will manage the votes?

Open Communities – **Ray Coyle**, your Independent Tenant Advisor.

### Will my vote be shared with Riverside and Mount Anvil?

No, all votes will be processed independently by **Open Communities** and will be completely anonymous to Riverside and Mount Anvil.

### How can I vote?

- By return pre-paid envelope to **Open Communities**
- Online via **Open Communities'** web site
- Secure ballot box placed in No26





# INDICATIVE TIMELINE UP UNTIL PLANNING SUBMISSION

Weekly drop-in sessions throughout

## Winter 21/22



- Resident consultation events
- Assess resident feedback
- Site surveys
- Appointing design consultants
- Exploring design options in line with resident and Southwark feedback

## Spring 22



- Resident vote – 1st Stage
- Pre-app meeting with Southwark planners
- Resident design workshop – scheme layout, block heights, no. of homes, amenity space, security
- Resident site visit

## Summer 22



- Resident design workshop – home layouts, private outdoor space, cycle space, lobbies, bin stores,
- Resident vote – 2nd Stage

## Autumn/Winter 22

- Submit planning application

