

# The redevelopment of Geoffrey, York & Canterbury Close (phase 1, Block A)







# Overview of Block A

- Building height 6 floors
- Mix of 1bed, 2bed & 3bed homes.

## Accessibility

- 5 x Wheelchair Accessible homes.

| Mix of homes          | Affordable rent |
|-----------------------|-----------------|
| Studio                | 0               |
| 1 Bedroom             | 8               |
| 2 Bedroom             | 2               |
| 2 Bed wheelchair unit | 1               |
| 3 Bedroom             | 12              |
| 3 Bed wheelchair unit | 2               |
| Total homes           | 25              |

## Moving into block A

**Mandatory moves** – 71 – 84 Geoffrey Close (13 Homes)

The 12 surplus homes will be offered in the following order and in line with housing need.  
1<sup>st</sup> 50 – 70 Geoffrey Close, 2<sup>nd</sup> 17-49 Geoffrey Close, 3<sup>rd</sup> 1-16 Geoffrey Close.

# New homes – what are the benefits?

- Homes to meet your housing need
- Homes will be on one level
- Private outdoor space for everyone
- Improved security with video door intercom, fob entry access & CCTV
- Homes will be better insulated/ventilated
- Keeping the community together, through a single move
- Adapted homes for those that require it.





# Building Fire safety – keeping you safe in your home

Safety measures in place:

- Homes will be fully sprinklered
- Emergency voice communication located at lift lobbies
- Evacuation alert system
- Dual use firefighting/ Evacuation lifts (2 no.)
- Staircase (1 no.).



# Landscape – overview

## LANDSCAPE PROPOSAL

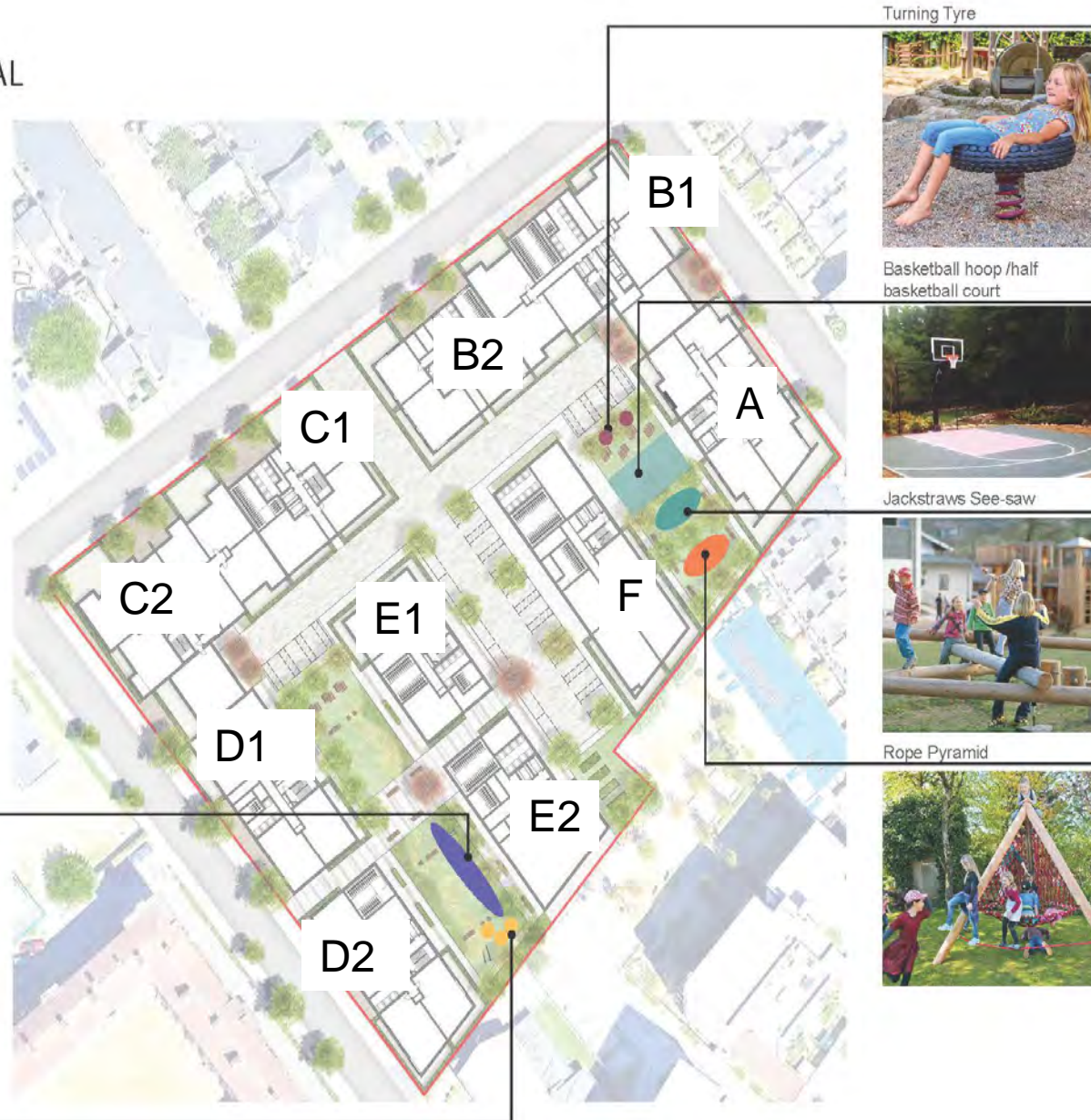
### PLAY EQUIPMENT



Agility Trial 3



Jumping Disc



Turning Tyre



Basketball hoop /half basketball court



Jackstraws See-saw



Rope Pyramid



# Features

- Cycle stands
- 'Playful' seating elements
- Central seating space
- Vertical greening
- Blue badge parking bay

# Ventilation, Cooling and Heating

## Ventilation

- Mechanical ventilation with heat recovery (MVHR) is provided in every home. This will extract moist, stale air and replace it with clean, filtered air. Heat is captured from the extracted air to warm the incoming supply, improving energy efficiency.
- Balcony doors allow living spaces to be opened up to the outside, and all bedrooms are provided with opening windows on restrictors for safety.

## Cooling

- Cooling is provided via the MVHR by significantly lowering the temperature of fresh air supplied to the apartment, this helps maintain a comfortable internal temperature level on the hottest days of summer.

## Heating

- Underfloor heating with thermostatic control is provided in living spaces and bedrooms, with heated towel radiators in bathrooms.
- Heat is generated by efficient air source heat pumps located on the roof, and heat interface units (HIU) in every home to heat the hot water supply and underfloor heating system when required. Residents will only pay for the heat that they use.



# Home layouts

The layouts enclosed are correct in terms of sizing and layout of rooms, however some detail around the internal placement of items in the kitchen may change.

Please ensure you complete your preferences form so we understand your requirements when allocating new homes.

---





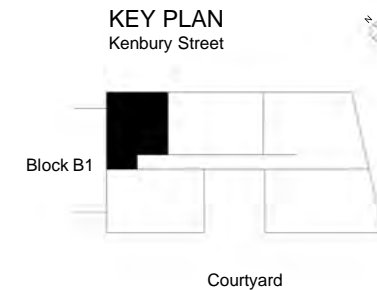
A1201 - 1 Bedroom 2 Person Home (Open Kitchen)  
 Levels 01, 02, 03, 04  
 4 No. Units  
 Area: 50.3 sqm



| Dwelling Type A1201 Room Dimensions |       |        |
|-------------------------------------|-------|--------|
| Room Name                           | Width | Length |
| Living Kitchen Dining               | 3.4   | 7.4    |
| Bedroom 1                           | 3.2   | 3.8    |

| Dwelling Type A1201 Room Areas |                     |
|--------------------------------|---------------------|
| Name                           | Area Achieved       |
| Balcony                        | 7.7 m <sup>2</sup>  |
| Bathroom                       | 4.4 m <sup>2</sup>  |
| Bedroom 1                      | 11.2 m <sup>2</sup> |
| Hall                           | 5.6 m <sup>2</sup>  |
| Living/Kitchen/Dining          | 22.6 m <sup>2</sup> |
| Storage                        | 1.2 m <sup>2</sup>  |
| Storage/Shelving               | 0.6 m <sup>2</sup>  |
| Utility/HIU                    | 1.5 m <sup>2</sup>  |

-  Window
-  Balcony Door
-  Apartment Entrance Door
-  Built-In Wardrobe
-  Closed Wall to Kitchen
-  650mm Space provision for fridge/freezer (FF)
-  600mm Space provision via removeable base unit for dish washer (DW)
-  Space provision via utility cupboards for washing machine (WM)
-  620mm Space provision for oven/hob (OV)
-  Hood installed over space for oven/hob (HD)
-  Sink, basin & tap installed (SK)
-  Dimensions Reference Point  
W - Width  
L - Length

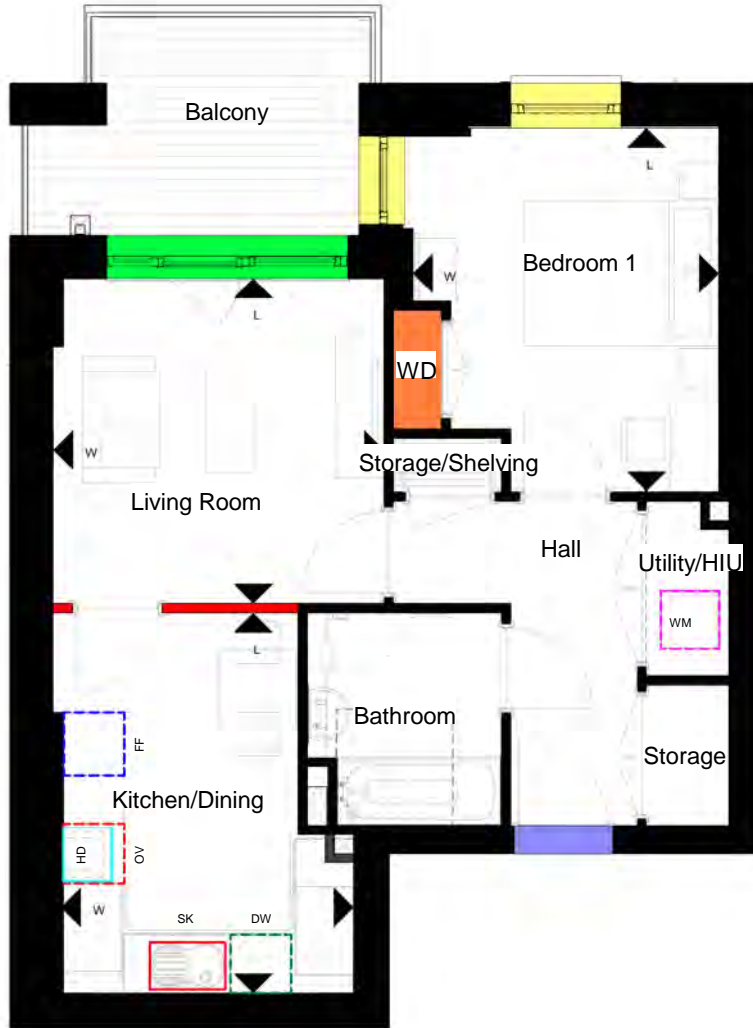


# A1201 - 1 Bedroom 2 Person Home (Closed Kitchen)

Levels 01, 02, 03, 04

4 No. Units

Area: 50.3 sqm




## Dwelling Type A1201 Room Dimensions

| Room Name   | Width | Length |
|-------------|-------|--------|
| Living Room | 3.4   | 3.3    |
| Bedroom 1   | 3.2   | 3.8    |
| Kitchen     | 3.0   | 3.9    |

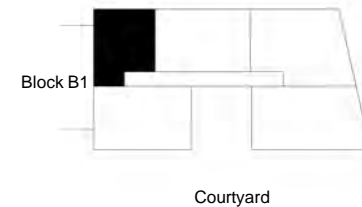
## Dwelling Type A1201 Room Areas

| Name             | Area Achieved       |
|------------------|---------------------|
| Balcony          | 7.7 m <sup>2</sup>  |
| Bathroom         | 4.4 m <sup>2</sup>  |
| Bedroom 1        | 11.2 m <sup>2</sup> |
| Hall             | 5.6 m <sup>2</sup>  |
| Kitchen/Dining   | 11.0 m <sup>2</sup> |
| Living Room      | 11.4 m <sup>2</sup> |
| Storage          | 1.2 m <sup>2</sup>  |
| Storage/Shelving | 0.6 m <sup>2</sup>  |
| Utility/HIU      | 1.5 m <sup>2</sup>  |

-  Window
-  Balcony Door
-  Apartment Entrance Door
-  Built-In Wardrobe
-  Closed Wall to Kitchen
-  650mm Space provision for fridge/freezer (FF)
-  600mm Space provision via removeable base unit for dish washer (DW)
-  Space provision via utility cupboards for washing machine (WM)
-  620mm Space provision for oven/hob (OV)
-  Hood installed over space for oven/hob (HD)
-  Sink, basin & tap installed (SK)
-  Dimensions Reference Point  
W - Width  
L - Length

## KEY PLAN

Kenbury Street



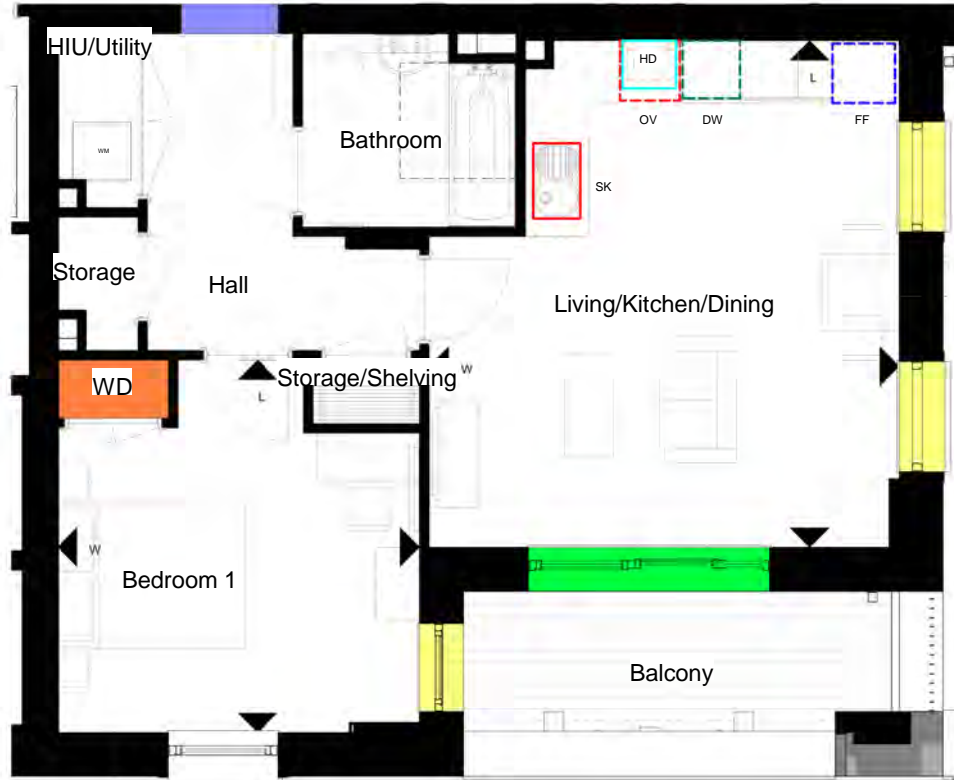


# A1202 - 1 Bedroom 2 Person Home (Open Kitchen)

Levels 02, 03, 04

3 No. Units

Area: 53.1 sqm



## Dwelling Type A1202 Room Dimensions

| Room Name             | Width | Length |
|-----------------------|-------|--------|
| Bedroom 1             | 3.7   | 3.8    |
| Living Kitchen Dining | 4.9   | 5.2    |

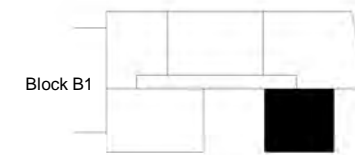
## Dwelling Type A1202 Room Areas

| Name                  | Area Achieved       |
|-----------------------|---------------------|
| Balcony               | 7.2 m <sup>2</sup>  |
| Bathroom              | 4.4 m <sup>2</sup>  |
| Bedroom 1             | 12.5 m <sup>2</sup> |
| Hall                  | 6.4 m <sup>2</sup>  |
| HIU/Utility           | 1.5 m <sup>2</sup>  |
| Living/Kitchen/Dining | 23.6 m <sup>2</sup> |
| Storage               | 1.1 m <sup>2</sup>  |
| Storage/Shelving      | 0.7 m <sup>2</sup>  |

- Window
- Balcony Door
- Apartment Entrance Door
- Built-In Wardrobe
- Closed Wall to Kitchen
- 650mm Space provision for fridge/freezer  
FF
- 600mm Space provision via removeable base unit for dish washer  
DW
- Space provision via utility cupboards for washing machine  
WM
- 620mm Space provision for oven/hob  
OV
- Hood installed over space for oven/hob  
HD
- Sink, basin & tap installed  
SK
- Dimensions Reference Point  
W - Width  
L - Length

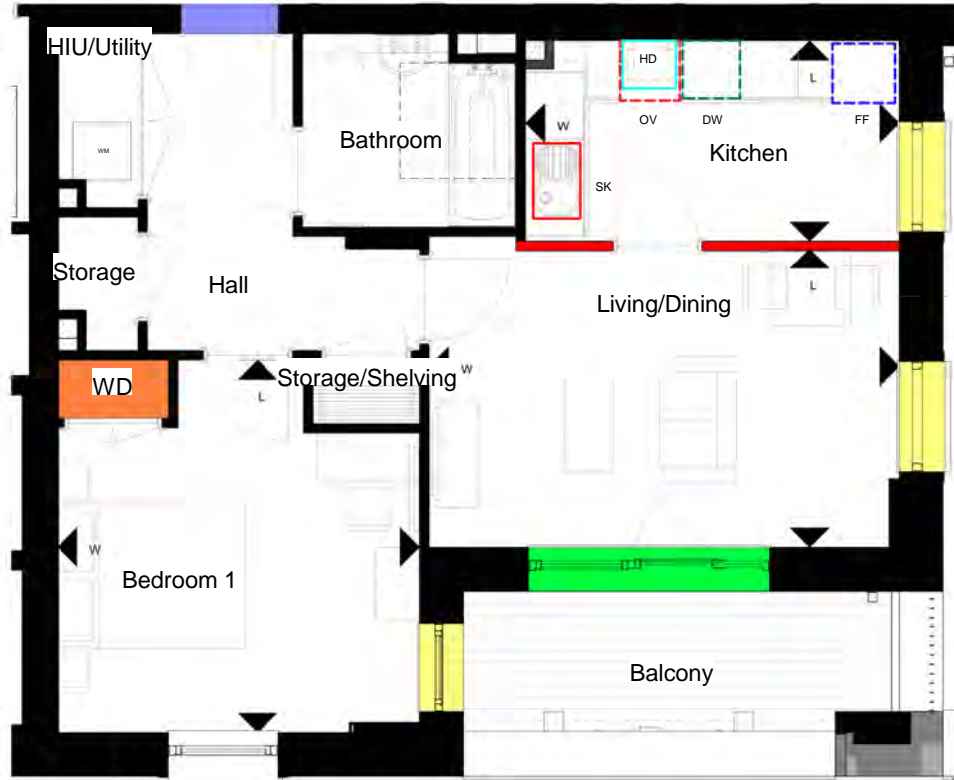
## KEY PLAN

Kenbury Street



Courtyard

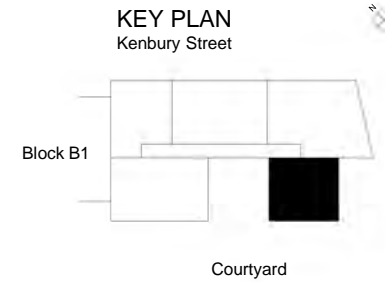
A1202 - 1 Bedroom 2 Person Home (Closed Kitchen)  
 Levels 02, 03, 04  
 3 No. Units  
 Area: 53.1 sqm



| Dwelling Type A1202 Room Dimensions |       |        |
|-------------------------------------|-------|--------|
| Room Name                           | Width | Length |
| Bedroom 1                           | 3.7   | 3.8    |
| Living Dining                       | 4.9   | 3.1    |
| Kitchen                             | 3.9   | 2.1    |

| Dwelling Type A1202 Room Areas |                     |
|--------------------------------|---------------------|
| Name                           | Area Achieved       |
| Balcony                        | 7.2 m <sup>2</sup>  |
| Bathroom                       | 4.4 m <sup>2</sup>  |
| Bedroom 1                      | 12.5 m <sup>2</sup> |
| Hall                           | 6.4 m <sup>2</sup>  |
| HIU/Utility                    | 1.5 m <sup>2</sup>  |
| Kitchen                        | 8.2 m <sup>2</sup>  |
| Living/Dining                  | 15.0 m <sup>2</sup> |
| Storage                        | 1.1 m <sup>2</sup>  |
| Storage/Shelving               | 0.7 m <sup>2</sup>  |

- Window
- Balcony Door
- Apartment Entrance Door
- Built-In Wardrobe
- Closed Wall to Kitchen
- 650mm Space provision for fridge/freezer (FF)
- 600mm Space provision via removeable base unit for dish washer (DW)
- Space provision via utility cupboards for washing machine (WM)
- 620mm Space provision for oven/hob (OV)
- Hood installed over space for oven/hob (HD)
- Sink, basin & tap installed (SK)
- Dimensions Reference Point  
W - Width  
L - Length





A1205 - 1 Bedroom 2 Person Home (Open Kitchen)  
 Levels 05  
 1 No. Units  
 Area: 53.7 sqm

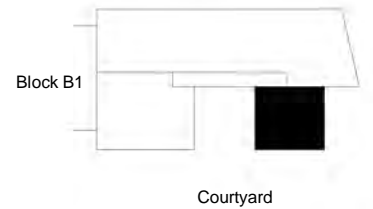


| Dwelling Type A1205 Room Dimensions |       |        |
|-------------------------------------|-------|--------|
| Room Name                           | Width | Length |
| Bedroom 1                           | 3.7   | 3.8    |
| Living Kitchen Dining               | 4.9   | 5.3    |

| Dwelling Type A1205 Room Areas |                     |
|--------------------------------|---------------------|
| Name                           | Area Achieved       |
| Balcony                        | 8.9 m <sup>2</sup>  |
| Bathroom                       | 4.5 m <sup>2</sup>  |
| Bedroom 1                      | 12.5 m <sup>2</sup> |
| Hall                           | 6.4 m <sup>2</sup>  |
| Living/Kitchen/Dining          | 23.7 m <sup>2</sup> |
| Storage                        | 1.1 m <sup>2</sup>  |
| Storage/Shelving               | 0.7 m <sup>2</sup>  |
| Utility/HIU                    | 1.5 m <sup>2</sup>  |

- Window
- Balcony Door
- Apartment Entrance Door
- Built-In Wardrobe
- Closed Wall to Kitchen
- 650mm Space provision for fridge/freezer  
FF
- 600mm Space provision via removeable base unit for dish washer  
DW
- Space provision via utility cupboards for washing machine  
WM
- 620mm Space provision for oven/hob  
OV
- Hood installed over space for oven/hob  
HD
- Sink, basin & tap installed  
SK
- Dimensions Reference Point  
W - Width  
L - Length

KEY PLAN  
 Kenbury Street

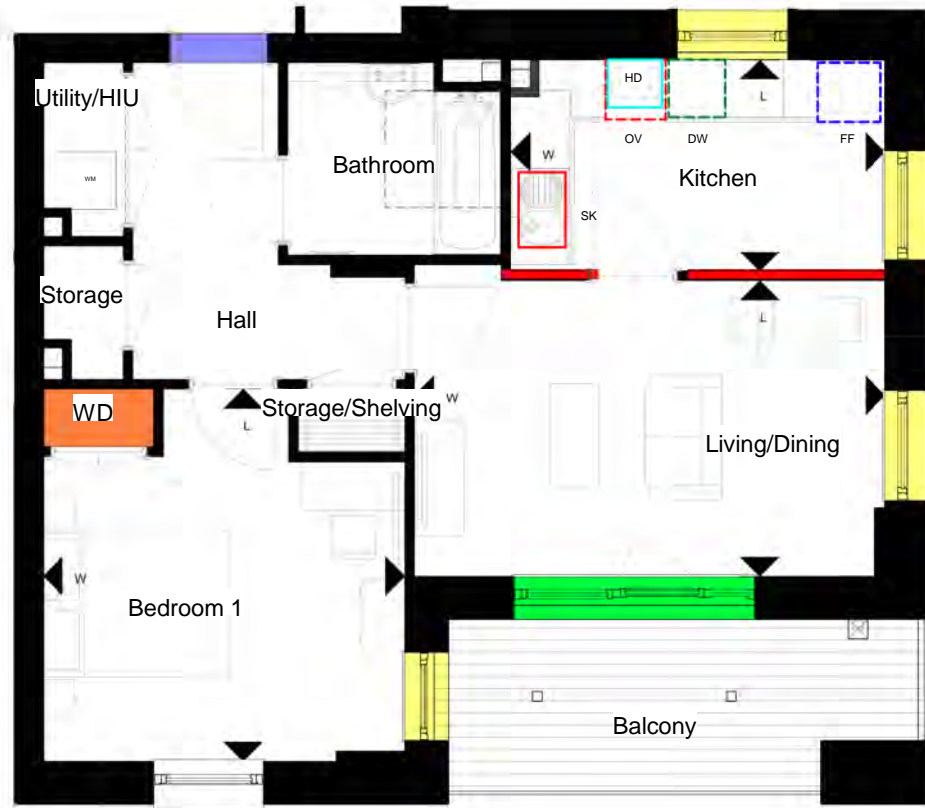


# A1205 - 1 Bedroom 2 Person Home (Closed Kitchen)

Levels 05

1 No. Units

Area: 53.7 sqm



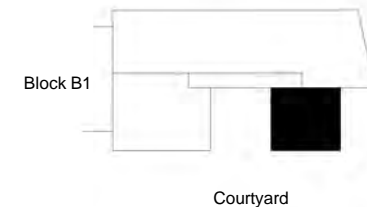
| Dwelling Type A1205 Room Dimensions |       |        |
|-------------------------------------|-------|--------|
| Room Name                           | Width | Length |
| Bedroom 1                           | 3.7   | 3.8    |
| Living Dining                       | 4.9   | 3.0    |
| Kitchen                             | 3.9   | 2.2    |

| Dwelling Type A1205 Room Areas |                     |
|--------------------------------|---------------------|
| Name                           | Area Achieved       |
| Balcony                        | 8.9 m <sup>2</sup>  |
| Bathroom                       | 4.5 m <sup>2</sup>  |
| Bedroom 1                      | 12.5 m <sup>2</sup> |
| Hall                           | 6.4 m <sup>2</sup>  |
| Kitchen                        | 8.5 m <sup>2</sup>  |
| Living/Dining                  | 14.9 m <sup>2</sup> |
| Storage                        | 1.1 m <sup>2</sup>  |
| Storage/Shelving               | 0.7 m <sup>2</sup>  |
| Utility/HIU                    | 1.5 m <sup>2</sup>  |

-  Window
-  Balcony Door
-  Apartment Entrance Door
-  Built-In Wardrobe
-  Closed Wall to Kitchen
-  650mm Space provision for fridge/freezer (FF)
-  600mm Space provision via removeable base unit for dish washer (DW)
-  Space provision via utility cupboards for washing machine (WM)
-  620mm Space provision for oven/hob (OV)
-  Hood installed over space for oven/hob (HD)
-  Sink, basin & tap installed (SK)
-  Dimensions Reference Point (W - Width, L - Length)

## KEY PLAN

Kenbury Street



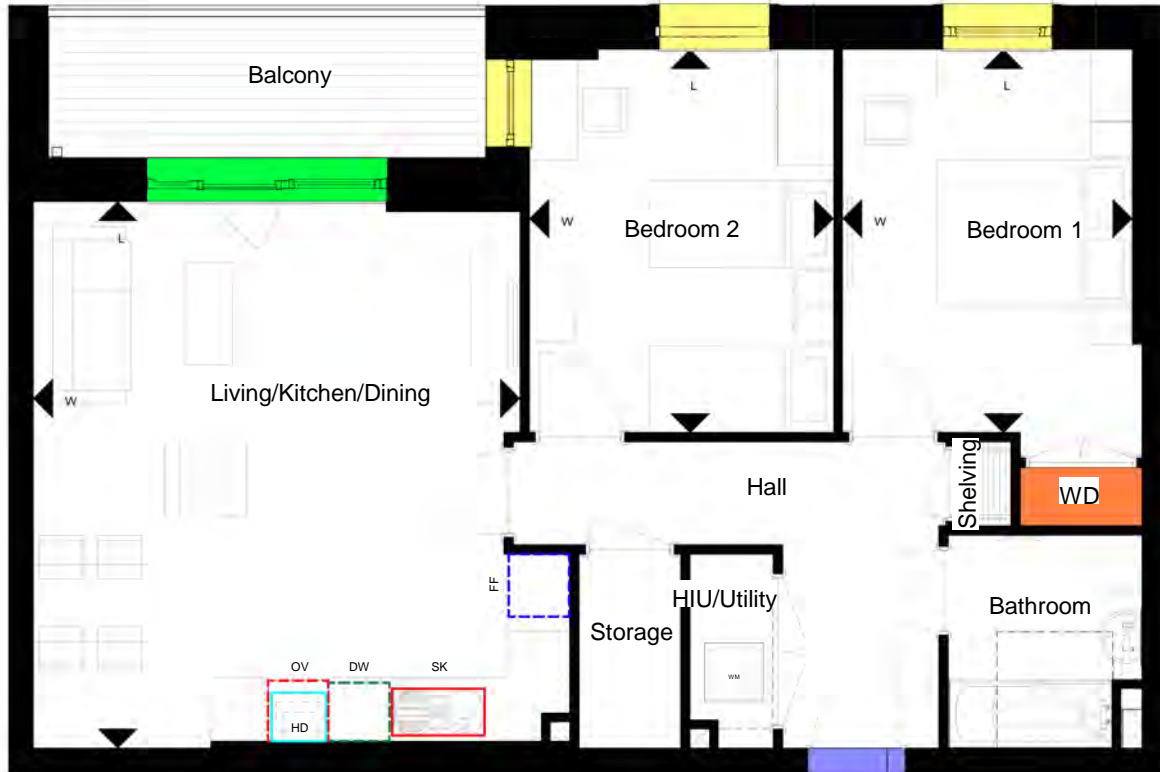


# A2401 - 2 Bedroom 4 Person Home (Open Kitchen)

Levels 01, 02

2 No. Units

Area: 74.4 sqm



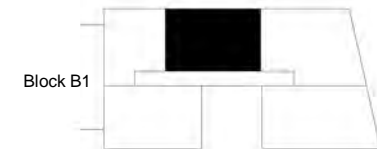
- Window
- Balcony Door
- Apartment Entrance Door
- Built-In Wardrobe
- Closed Wall to Kitchen
- 650mm Space provision for fridge/freezer  
FF
- 600mm Space provision via removeable base unit for dish washer  
DW
- Space provision via utility cupboards for washing machine  
WM
- 620mm Space provision for oven/hob  
OV
- Hood installed over space for oven/hob  
HD
- Sink, basin & tap installed  
SK
- W  
Dimensions Reference Point  
W - Width  
L - Length

| Dwelling Type A2401 Room Dimensions |       |        |  |
|-------------------------------------|-------|--------|--|
| Room Name                           | Width | Length |  |
| Living Kitchen Dining               | 5.0   | 5.6    |  |
| Bedroom 2                           | 3.1   | 4.0    |  |
| Bedroom 1                           | 3.0   | 4.0    |  |

| Dwelling Type A2401 Room Areas |                     |
|--------------------------------|---------------------|
| Name                           | Area Achieved       |
| Balcony                        | 7.3 m <sup>2</sup>  |
| Bedroom 1                      | 12.6 m <sup>2</sup> |
| Bedroom 2                      | 12.4 m <sup>2</sup> |
| Living/Kitchen/Dining          | 28.9 m <sup>2</sup> |
| Shelving                       | 0.5 m <sup>2</sup>  |
| Storage                        | 2.1 m <sup>2</sup>  |

## KEY PLAN

Kenbury Street



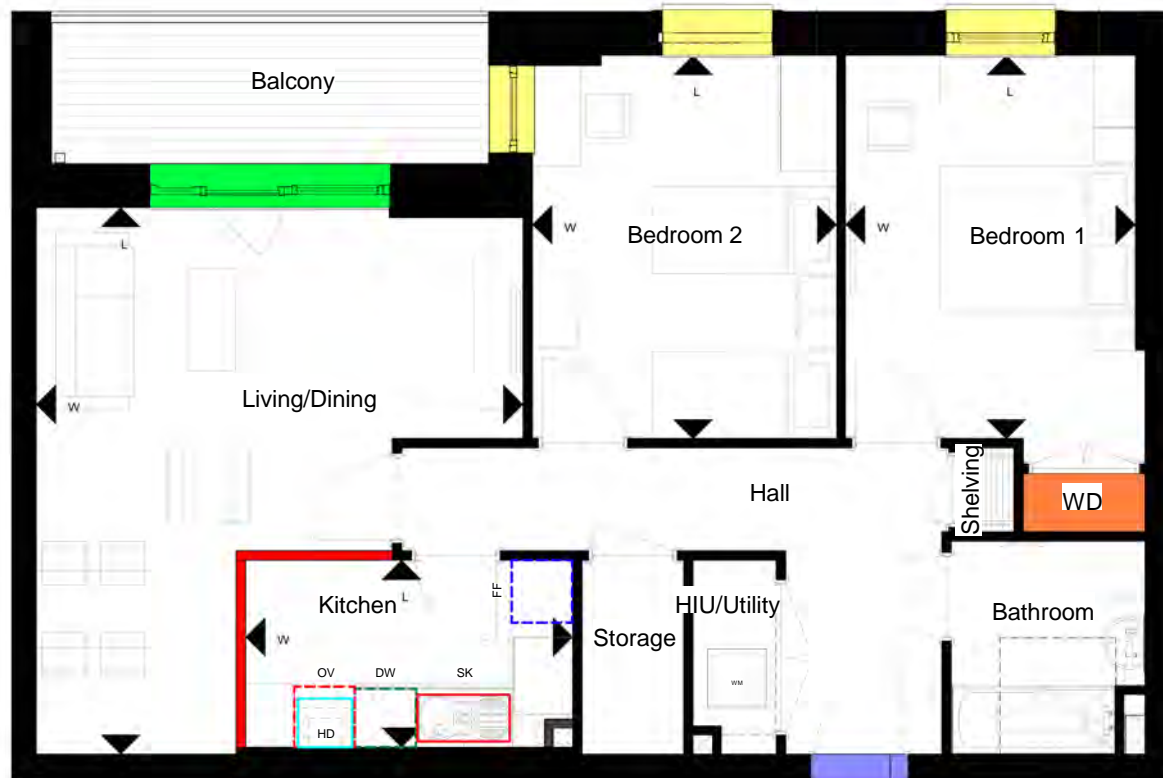
Courtyard

# A2401 - 2 Bedroom 4 Person Home (Closed Kitchen)

Levels 01, 02

2 No. Units

Area: 74.4 sqm



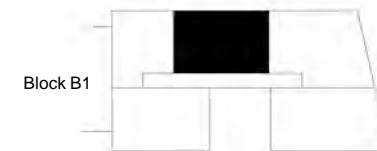
- Window
- Balcony Door
- Apartment Entrance Door
- Built-In Wardrobe
- Closed Wall to Kitchen
- 650mm Space provision for fridge/freezer (FF)
- 600mm Space provision via removeable base unit for dish washer (DW)
- Space provision via utility cupboards for washing machine (WM)
- 620mm Space provision for oven/hob (OV)
- Hood installed over space for oven/hob (HD)
- Sink, basin & tap installed (SK)

Dimensions Reference Point  
W - Width  
L - Length

| Dwelling Type A2401 Room Dimensions |       |        |
|-------------------------------------|-------|--------|
| Room Name                           | Width | Length |
| Living Dining                       | 5.0   | 5.6    |
| Bedroom 2                           | 3.1   | 4.0    |
| Bedroom 1                           | 3.0   | 4.0    |
| Kitchen                             | 3.4   | 1.9    |

| Dwelling Type A2401 Room Areas |                     |
|--------------------------------|---------------------|
| Name                           | Area Achieved       |
| Balcony                        | 7.3 m <sup>2</sup>  |
| Bedroom 1                      | 12.6 m <sup>2</sup> |
| Bedroom 2                      | 12.4 m <sup>2</sup> |
| Kitchen                        | 6.8 m <sup>2</sup>  |
| Living/Dining                  | 20.4 m <sup>2</sup> |
| Shelving                       | 0.5 m <sup>2</sup>  |
| Storage                        | 2.1 m <sup>2</sup>  |

## KEY PLAN Kenbury Street



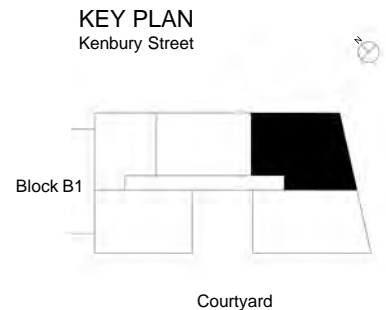
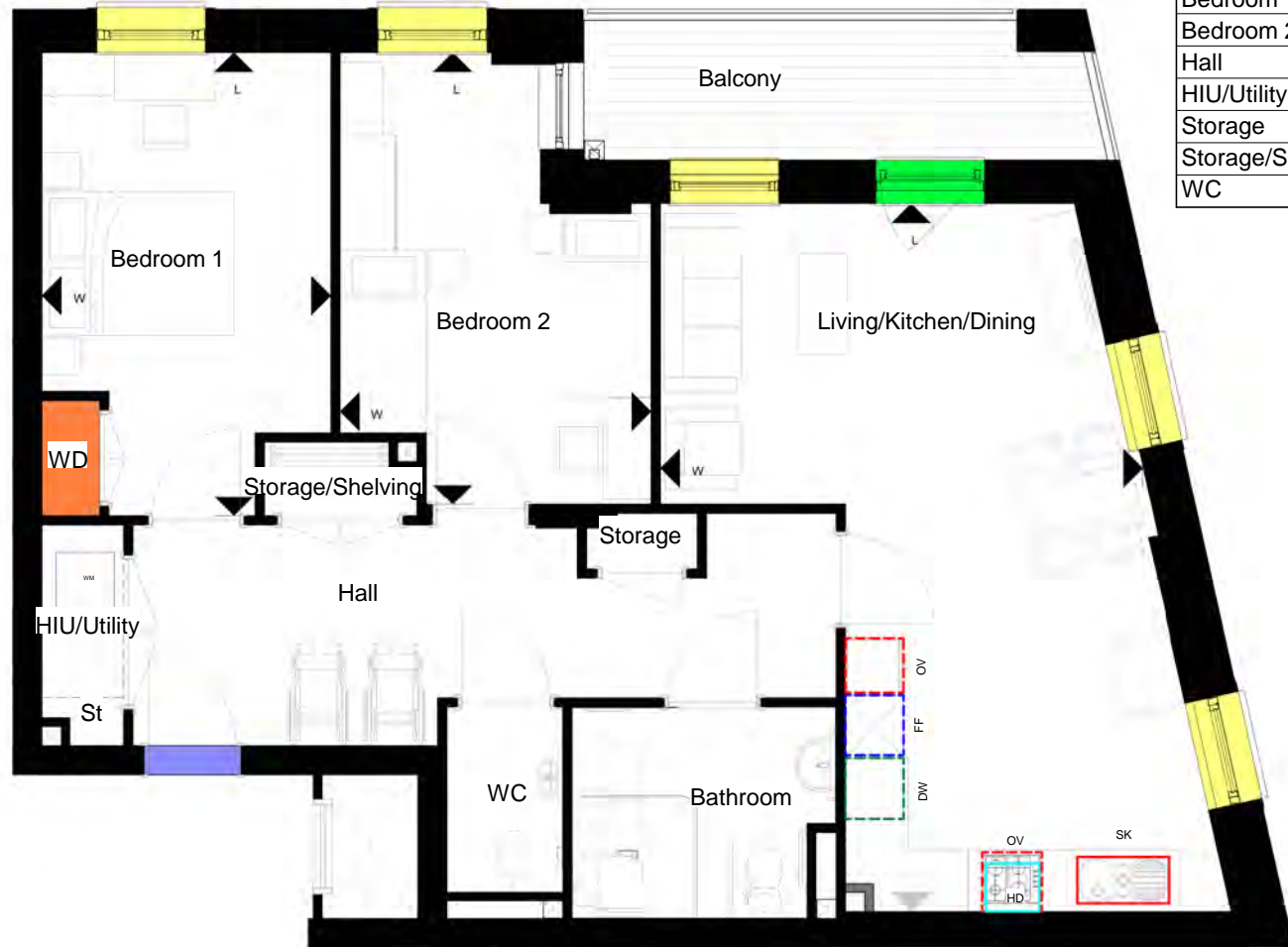
Courtyard

A2405 - 2 Bedroom 4 Person Home Wheelchair Accessible  
 Level 01  
 1 No. Units  
 Area: 87.4 sqm

| Dwelling Type A2405 Room Dimensions |       |        |
|-------------------------------------|-------|--------|
| Room Name                           | Width | Length |
| Bedroom 1                           | 3.0   | 4.8    |
| Bedroom 2                           | 3.2   | 4.7    |
| Living Kitchen Dining               | 5.0   | 7.4    |

| Dwelling Type A2405 Room Areas |                     |
|--------------------------------|---------------------|
| Name                           | Area Achieved       |
| Balcony                        | 7.7 m <sup>2</sup>  |
| Bathroom                       | 6.0 m <sup>2</sup>  |
| Bedroom 1                      | 12.9 m <sup>2</sup> |
| Bedroom 2                      | 12.7 m <sup>2</sup> |
| Hall                           | 14.2 m <sup>2</sup> |
| HIU/Utility                    | 1.5 m <sup>2</sup>  |
| Storage                        | 0.6 m <sup>2</sup>  |
| Storage/Shelving               | 1.2 m <sup>2</sup>  |
| WC                             | 2.3 m <sup>2</sup>  |

-  Window
-  Balcony Door
-  Apartment Entrance Door
-  Built-In Wardrobe
-  Closed Wall to Kitchen
-  650mm Space provision for fridge/freezer (FF)
-  600mm Space provision via removeable base unit for dish washer (DW)
-  Space provision via utility cupboards for washing machine (WM)
-  620mm Space provision for oven/hob (OV)
-  Hood installed over space for oven/hob (HD)
-  Sink, basin & tap installed (SK)
-  Dimensions Reference Point  
W - Width  
L - Length





# A3401 - 3 Bedroom 4 Person Home (Open Kitchen)

Levels 03, 04

2 No. Units

Area: 74.4 sqm



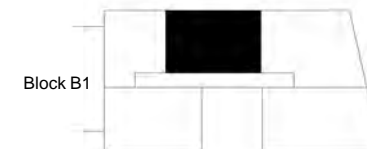
| Dwelling Type A3401 Room Areas |                     |
|--------------------------------|---------------------|
| Name                           | Area Achieved       |
| Bathroom                       | 4.4 m <sup>2</sup>  |
| Bedroom 1                      | 11.3 m <sup>2</sup> |
| Bedroom 2                      | 8.6 m <sup>2</sup>  |
| Bedroom 3                      | 8.0 m <sup>2</sup>  |
| Hall                           | 8.1 m <sup>2</sup>  |
| HIU/Utility                    | 1.7 m <sup>2</sup>  |
| Living/Kitchen/Dining          | 25.6 m <sup>2</sup> |
| Shelving                       | 0.4 m <sup>2</sup>  |
| Storage                        | 2.1 m <sup>2</sup>  |

- Window
- Balcony Door
- Apartment Entrance Door
- Built-In Wardrobe
- Closed Wall to Kitchen
- 650mm Space provision for fridge/freezer (FF)
- 600mm Space provision via removeable base unit for dish washer (DW)
- Space provision via utility cupboards for washing machine (WM)
- 620mm Space provision for oven/hob (OV)
- Hood installed over space for oven/hob (HD)
- Sink, basin & tap installed (SK)
- Dimensions Reference Point  
W - Width  
L - Length

**Dwelling Type A3401 Room Dimensions**

| Room Name             | Width | Length |
|-----------------------|-------|--------|
| Living Kitchen Dining | 5.5   | 5.6    |
| Bedroom 3             | 2.6   | 3.9    |
| Bedroom 2             | 2.2   | 4.0    |
| Bedroom 1             | 2.8   | 4.0    |

**KEY PLAN**  
Kenbury Street



Courtyard

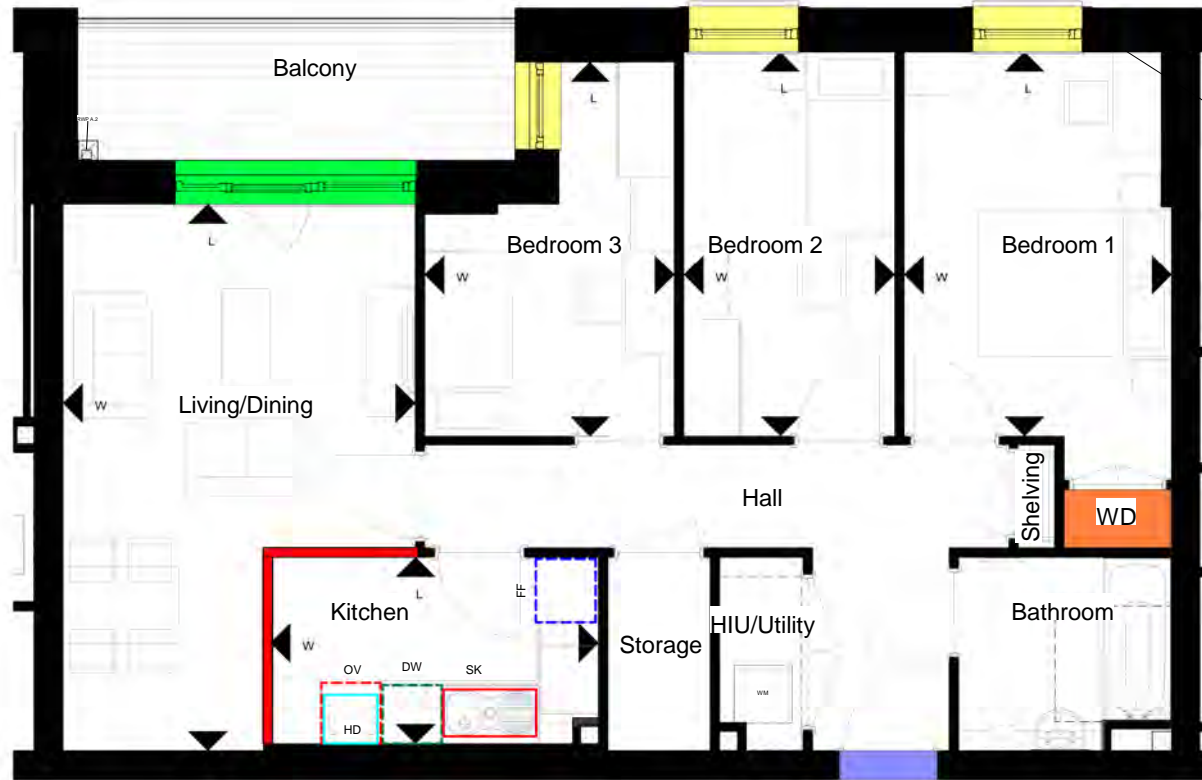
# A3401 - 3 Bedroom 4 Person Home (Closed Kitchen)

Levels 03, 04

2 No. Units

Area: 74.4 sqm

| Dwelling Type A3401 Room Dimensions |       |        |
|-------------------------------------|-------|--------|
| Room Name                           | Width | Length |
| Living Dining                       | 3.6   | 5.6    |
| Bedroom 3                           | 2.6   | 3.9    |
| Bedroom 2                           | 2.2   | 4.0    |
| Bedroom 1                           | 2.8   | 4.0    |
| Kitchen                             | 3.4   | 1.9    |

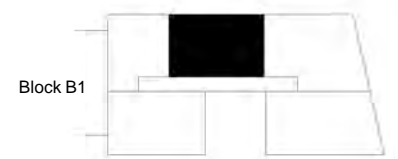


| Dwelling Type A3401 Room... |                     |
|-----------------------------|---------------------|
| Name                        | Area Achieved       |
| Bathroom                    | 4.4 m <sup>2</sup>  |
| Bedroom 1                   | 11.3 m <sup>2</sup> |
| Bedroom 2                   | 8.6 m <sup>2</sup>  |
| Bedroom 3                   | 8.0 m <sup>2</sup>  |
| Hall                        | 9.3 m <sup>2</sup>  |
| HIU/Utility                 | 1.7 m <sup>2</sup>  |
| Kitchen                     | 6.7 m <sup>2</sup>  |
| Living/Dining               | 17.2 m <sup>2</sup> |
| Shelving                    | 0.4 m <sup>2</sup>  |
| Storage                     | 2.1 m <sup>2</sup>  |

-  Window
-  Balcony Door
-  Apartment Entrance Door
-  Built-In Wardrobe
-  Closed Wall to Kitchen
-  650mm Space provision for fridge/freezer (FF)
-  600mm Space provision via removeable base unit for dish washer (DW)
-  Space provision via utility cupboards for washing machine (WM)
-  620mm Space provision for oven/hob (OV)
-  Hood installed over space for oven/hob (HD)
-  Sink, basin & tap installed (SK)
-  Dimensions Reference Point  
W - Width  
L - Length

## KEY PLAN

Kenbury Street



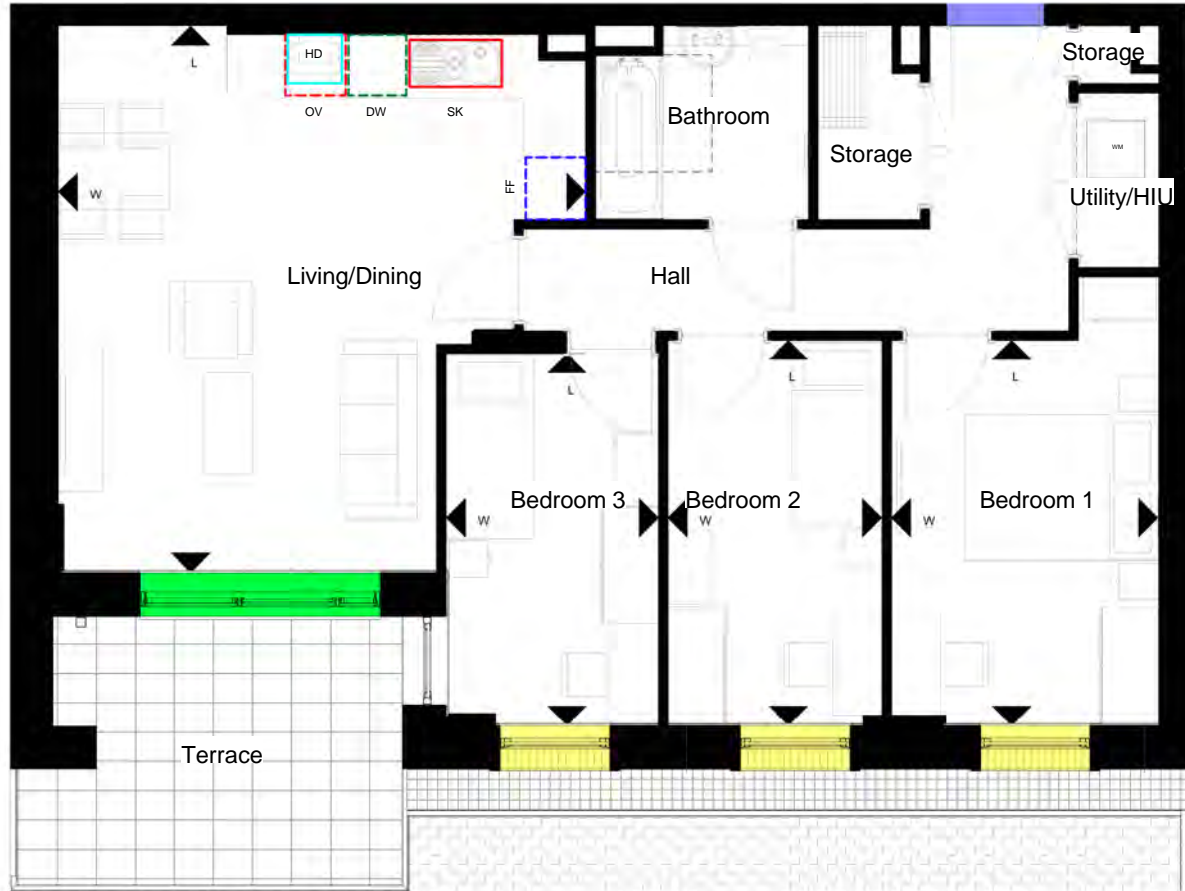
Courtyard

# A3402 - 3 Bedroom 4 Person Home (Open Kitchen)

Levels 00, 01, 02, 03, 04

5 No. Units

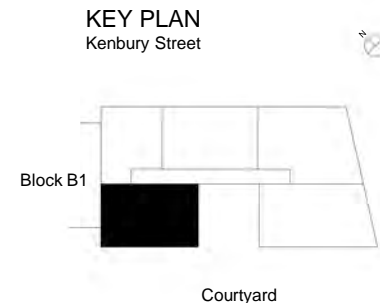
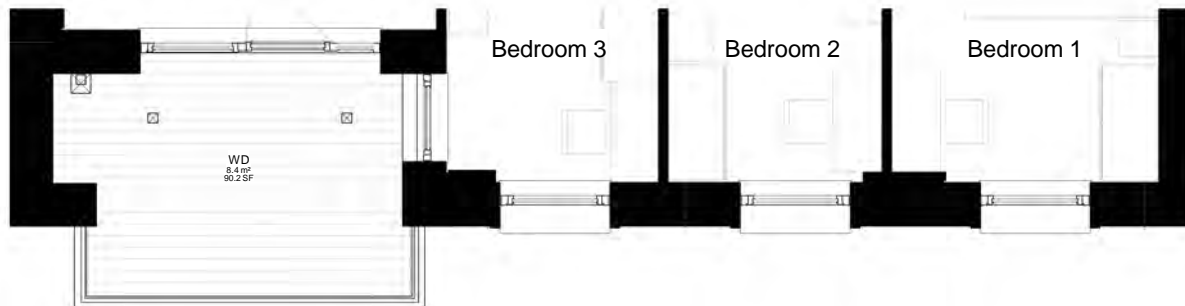
Area: 75.9 sqm



| Dwelling Type A3402 Room... |                     |
|-----------------------------|---------------------|
| Name                        | Area Achieved       |
| Bathroom                    | 4.4 m <sup>2</sup>  |
| Bedroom 1                   | 11.5 m <sup>2</sup> |
| Bedroom 2                   | 8.7 m <sup>2</sup>  |
| Bedroom 3                   | 8.4 m <sup>2</sup>  |
| Hall                        | 8.9 m <sup>2</sup>  |
| Living/Dining               | 26.1 m <sup>2</sup> |
| Storage                     | 2.1 m <sup>2</sup>  |
| Storage                     | 0.5 m <sup>2</sup>  |
| Terrace                     | 10.8 m <sup>2</sup> |
| Utility/HIU                 | 1.5 m <sup>2</sup>  |
| WD                          | 8.4 m <sup>2</sup>  |

| Dwelling Type A3402 Room Dimensions |       |        |
|-------------------------------------|-------|--------|
| Room Name                           | Width | Length |
| Living Kitchen Dining               | 5.4   | 5.6    |
| Bedroom 3                           | 2.2   | 3.8    |
| Bedroom 2                           | 2.2   | 4.0    |
| Bedroom 1                           | 2.8   | 4.0    |

- Window
- Balcony Door
- Apartment Entrance Door
- Built-In Wardrobe
- Closed Wall to Kitchen
- 650mm Space provision for fridge/freezer (FF)
- 600mm Space provision via removeable base unit for dish washer (DW)
- Space provision via utility cupboards for washing machine (WM)
- 620mm Space provision for oven/hob (OV)
- Hood installed over space for oven/hob (HD)
- Sink, basin & tap installed (SK)
- Dimensions Reference Point (W - Width, L - Length)



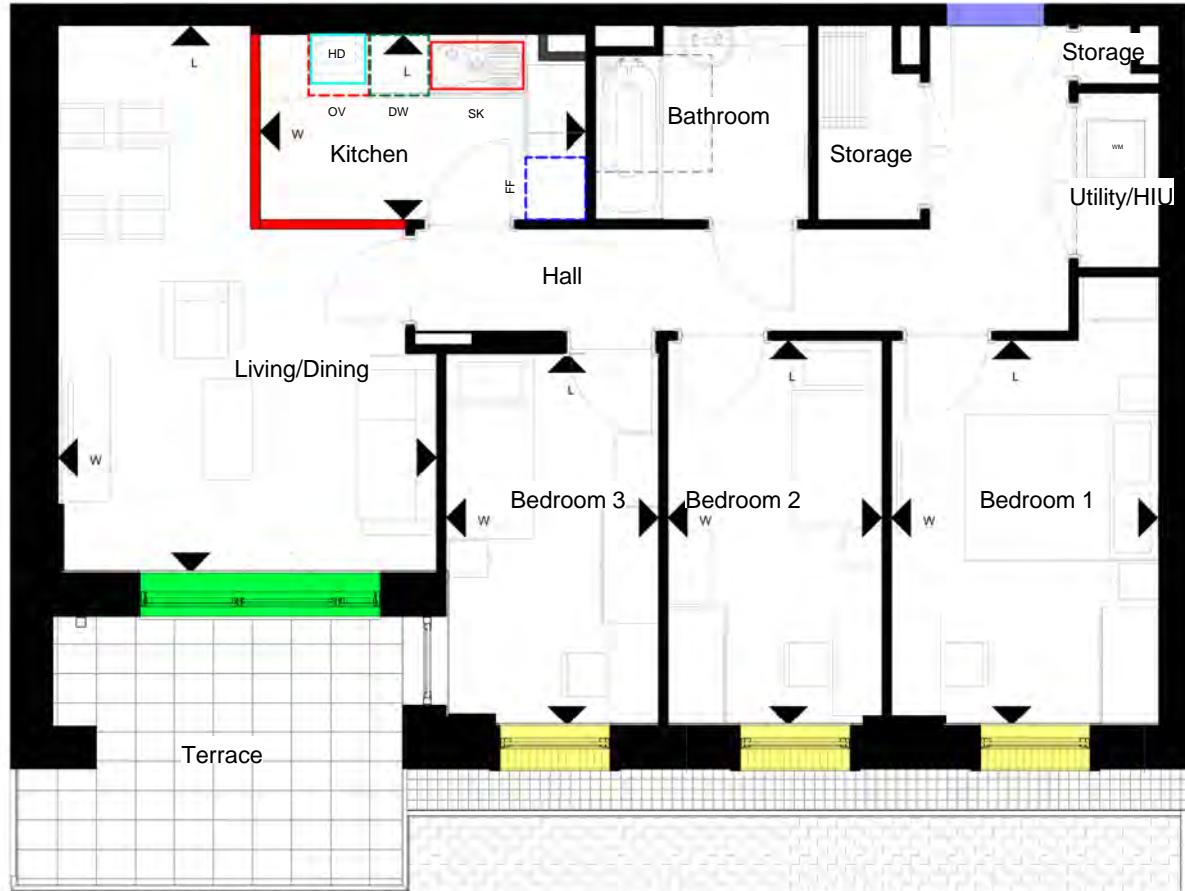


# A3402 - 3 Bedroom 4 Person Home (Closed Kitchen)

Levels 00, 01, 02, 03, 04

5 No. Units

Area: 75.9 sqm



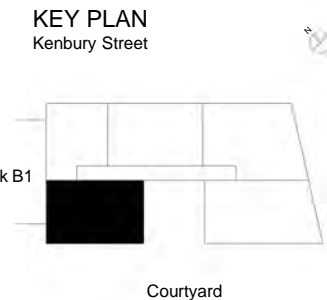
| Dwelling Type A3402 Room |                     |
|--------------------------|---------------------|
| Name                     | Area Achieved       |
| Bathroom                 | 4.4 m <sup>2</sup>  |
| Bedroom 1                | 11.5 m <sup>2</sup> |
| Bedroom 2                | 8.7 m <sup>2</sup>  |
| Bedroom 3                | 8.4 m <sup>2</sup>  |
| Hall                     | 10.4 m <sup>2</sup> |
| Kitchen                  | 6.7 m <sup>2</sup>  |
| Living/Dining            | 17.6 m <sup>2</sup> |
| Storage                  | 2.1 m <sup>2</sup>  |
| Storage                  | 0.5 m <sup>2</sup>  |
| Terrace                  | 10.8 m <sup>2</sup> |
| Utility/HIU              | 1.5 m <sup>2</sup>  |
| WD                       | 8.4 m <sup>2</sup>  |

- Window
- Balcony Door
- Apartment Entrance Door
- Built-In Wardrobe
- Closed Wall to Kitchen
- 650mm Space provision for fridge/freezer (FF)
- 600mm Space provision via removeable base unit for dish washer (DW)
- Space provision via utility cupboards for washing machine (WM)
- 620mm Space provision for oven/hob (OV)
- Hood installed over space for oven/hob (HD)
- Sink, basin & tap installed (SK)
- Dimensions Reference Point  
W - Width  
L - Length

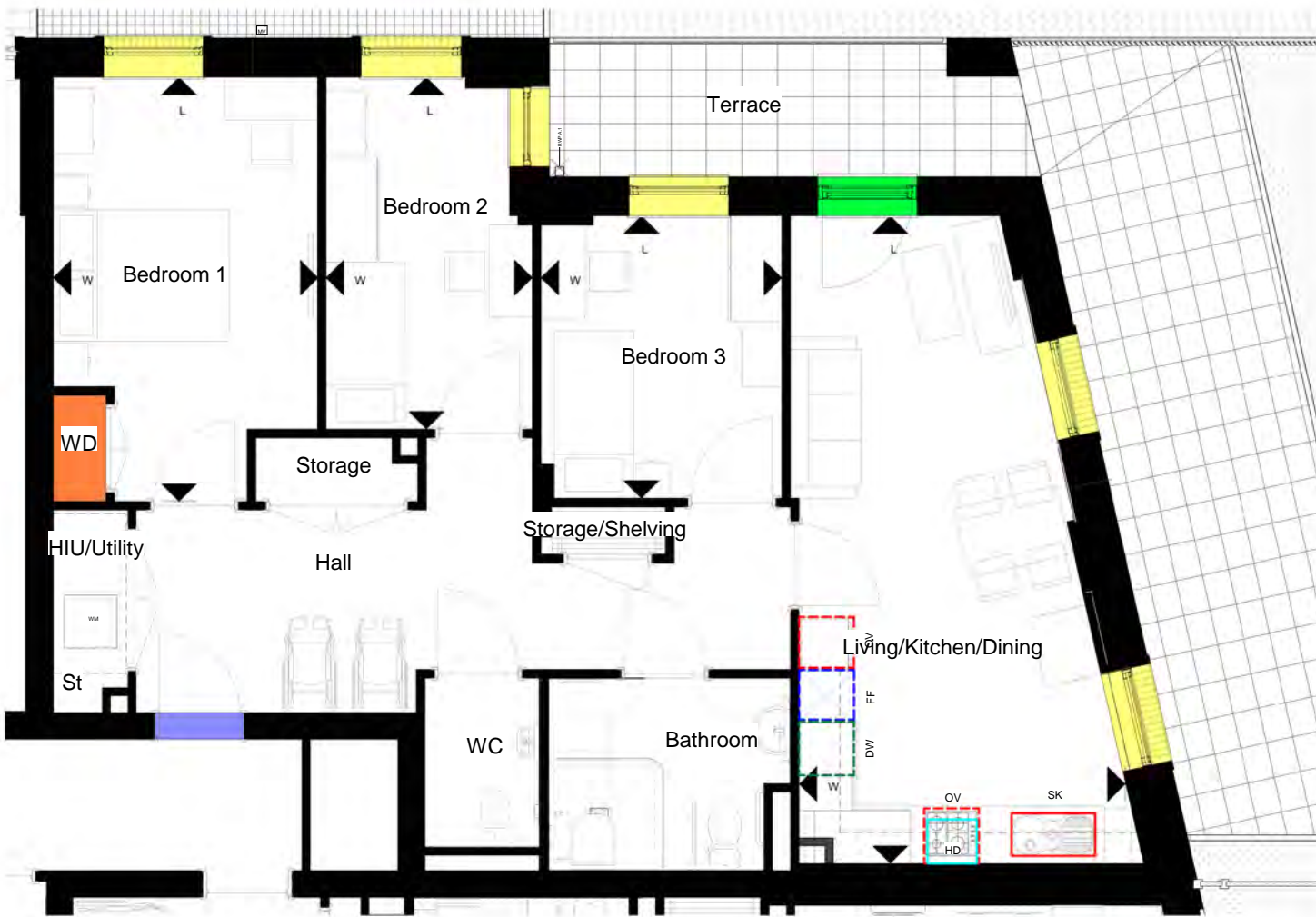
| Dwelling Type A3402 Room Dimensions |       |        |
|-------------------------------------|-------|--------|
| Room Name                           | Width | Length |
| Living Dining                       | 3.9   | 5.6    |
| Bedroom 3                           | 2.2   | 3.8    |
| Bedroom 2                           | 2.2   | 4.0    |
| Bedroom 1                           | 2.8   | 4.0    |
| Kitchen                             | 3.4   | 1.9    |



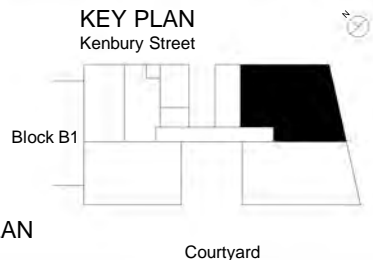
Levels 01, 02, 03, 04



A3407W - 3 Bedroom 4 Person Home Wheelchair Accessible  
 Level 00 / 1 No. Units / Area: 87.4 sqm



- Window
- Balcony Door
- Apartment Entrance Door
- Built-In Wardrobe
- Closed Wall to Kitchen
- 650mm Space provision for fridge/freezer (FF)
- 600mm Space provision via removable base unit for dish washer (DW)
- Space provision via utility cupboards for washing machine (WM)
- 620mm Space provision for oven/hob (OV)
- Hood installed over space for oven/hob (HD)
- Sink, basin & tap installed (SK)
- W  
Dimensions Reference Point  
W - Width  
L - Length



| Dwelling Type A3407 Room Areas |                     |
|--------------------------------|---------------------|
| Name                           | Area Achieved       |
| Bathroom                       | 6.1 m <sup>2</sup>  |
| Bedroom 1                      | 12.9 m <sup>2</sup> |
| Bedroom 2                      | 8.9 m <sup>2</sup>  |
| Bedroom 3                      | 8.7 m <sup>2</sup>  |
| Hall                           | 15.0 m <sup>2</sup> |
| HIU/Utility                    | 1.6 m <sup>2</sup>  |
| Living/Kitchen/Dining          | 24.2 m <sup>2</sup> |
| Storage                        | 1.3 m <sup>2</sup>  |
| Storage/Shelving               | 0.8 m <sup>2</sup>  |
| Terrace                        | 14.1 m <sup>2</sup> |
| WC                             | 2.5 m <sup>2</sup>  |

| Dwelling Type A3407 Room Dimensions |       |        |
|-------------------------------------|-------|--------|
| Room Name                           | Width | Length |
| Bedroom 1                           | 3.0   | 4.8    |
| Bedroom 2                           | 2.3   | 4.0    |
| Bedroom 3                           | 2.7   | 3.2    |
| Living Kitchen Dining               | 3.7   | 7.3    |

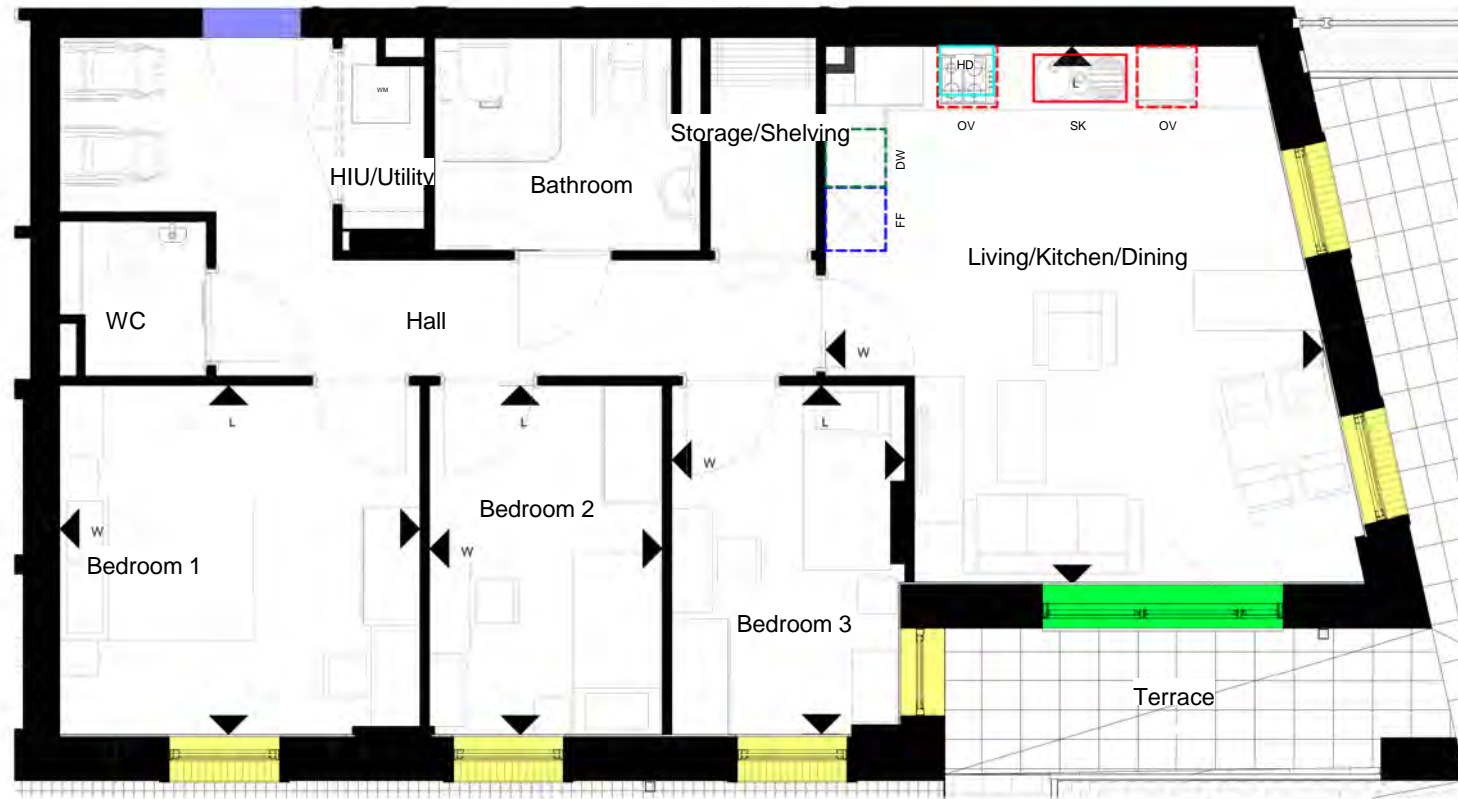
KEY PLAN

# A3408W - 3 Bedroom 4 Person Home Wheelchair Accessible

Level 00

1 No. Units

Area: 86.8 sqm

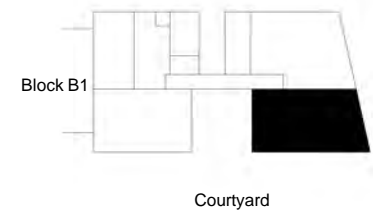


- Window
- Balcony Door
- Apartment Entrance Door
- Built-In Wardrobe
- Closed Wall to Kitchen
- 650mm Space provision for fridge/freezer  
FF
- 600mm Space provision via removeable base unit for dish washer  
DW
- Space provision via utility cupboards for washing machine  
WM
- 620mm Space provision for oven/hob  
OV
- Hood installed over space for oven/hob  
HD
- Sink, basin & tap installed  
SK
- Dimensions Reference Point  
W - Width  
L - Length

| Dwelling Type A3408 Room Dimensions |       |        |
|-------------------------------------|-------|--------|
| Room Name                           | Width | Length |
| Bedroom 1                           | 3.7   | 3.6    |
| Bedroom 2                           | 2.4   | 3.6    |

| Dwelling Type A3408 Room Areas |                     |
|--------------------------------|---------------------|
| Name                           | Area Achieved       |
| Bathroom                       | 6.1 m <sup>2</sup>  |
| Bedroom 1                      | 13.4 m <sup>2</sup> |
| Bedroom 2                      | 8.7 m <sup>2</sup>  |
| Hall                           | 13.1 m <sup>2</sup> |
| HIU/Utility                    | 1.5 m <sup>2</sup>  |
| Storage/Shelving               | 2.4 m <sup>2</sup>  |
| Terrace                        | 11.4 m <sup>2</sup> |
| WC                             | 2.4 m <sup>2</sup>  |

## KEY PLAN





# A3501 - 3 Bedroom 5 Person Home (Open Kitchen)

Levels 01

1 No. Units

Area: 86.7 sqm



- Window
- Balcony Door
- Apartment Entrance Door
- Built-In Wardrobe
- Closed Wall to Kitchen
- 650mm Space provision for fridge/freezer (FF)
- 600mm Space provision via removeable base unit for dish washer (DW)
- Space provision via utility cupboards for washing machine (WM)
- 620mm Space provision for oven/hob (OV)
- Hood installed over space for oven/hob (HD)
- Sink, basin & tap installed (SK)
- Dimensions Reference Point  
W - Width  
L - Length

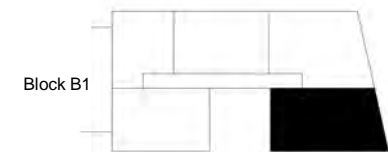
Dwelling Type A3501 Room Dimensions

| Room Name             | Width | Length |
|-----------------------|-------|--------|
| Bedroom 1             | 3.0   | 3.9    |
| Bedroom 2             | 2.2   | 4.0    |
| Bedroom 3             | 3.3   | 3.9    |
| Living Kitchen Dining | 6.6   | 5.6    |

Dwelling Type A3501 Room Areas

| Name             | Area Achieved       |
|------------------|---------------------|
| Balcony          | 8.0 m <sup>2</sup>  |
| Bathroom         | 4.4 m <sup>2</sup>  |
| Bedroom 1        | 11.1 m <sup>2</sup> |
| Bedroom 2        | 8.5 m <sup>2</sup>  |
| Bedroom 3        | 12.2 m <sup>2</sup> |
| Hall             | 9.6 m <sup>2</sup>  |
| Storage          | 1.8 m <sup>2</sup>  |
| Storage/Shelving | 0.7 m <sup>2</sup>  |
| Utility/HIU      | 1.7 m <sup>2</sup>  |
| WC               | 1.9 m <sup>2</sup>  |

KEY PLAN  
Kenbury Street

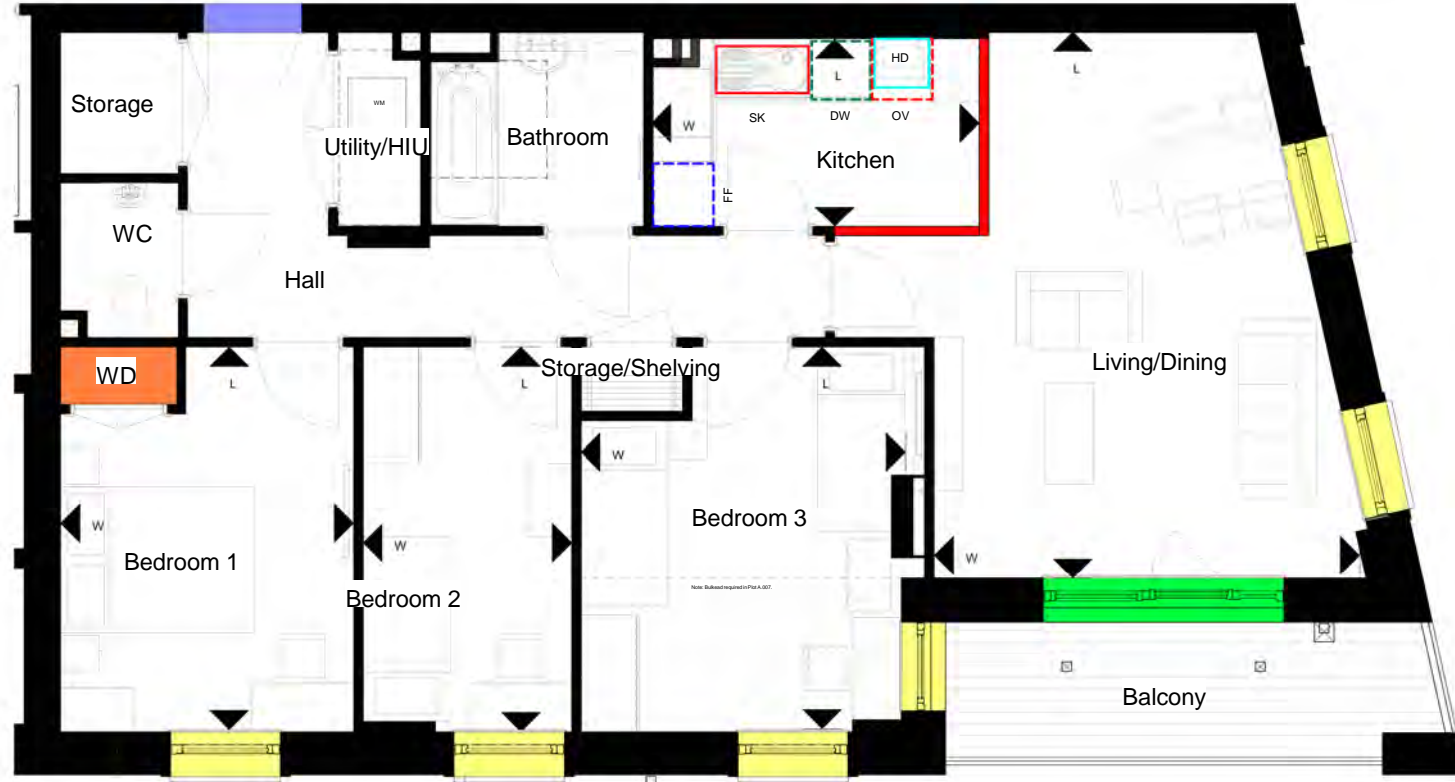


Courtyard

# A3501 - 3 Bedroom 5 Person Home (Closed Kitchen)

Levels 01

1 No. Units / Area: 86.7 sqm

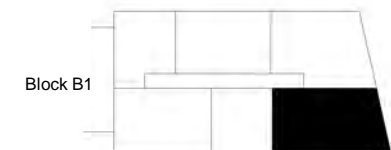


- Window
- Balcony Door
- Apartment Entrance Door
- Built-In Wardrobe
- Closed Wall to Kitchen
- 650mm Space provision for fridge/freezer  
FF
- 600mm Space provision via removeable base unit for dish washer  
DW
- Space provision via utility cupboards for washing machine  
WM
- 620mm Space provision for oven/hob  
OV
- Hood installed over space for oven/hob  
HD
- Sink, basin & tap installed  
SK
- Dimensions Reference Point  
W - Width  
L - Length

| Dwelling Type A3501 Room Dimensions |       |        |
|-------------------------------------|-------|--------|
| Room Name                           | Width | Length |
| Bedroom 1                           | 3.0   | 3.9    |
| Bedroom 2                           | 2.2   | 4.0    |
| Bedroom 3                           | 3.3   | 3.9    |
| Living Dining                       | 4.4   | 5.6    |
| Kitchen                             | 3.4   | 1.9    |

| Dwelling Type A3501 Room Areas |                     |
|--------------------------------|---------------------|
| Name                           | Area Achieved       |
| Balcony                        | 8.0 m <sup>2</sup>  |
| Bathroom                       | 4.4 m <sup>2</sup>  |
| Bedroom 1                      | 11.1 m <sup>2</sup> |
| Bedroom 2                      | 8.5 m <sup>2</sup>  |
| Bedroom 3                      | 12.3 m <sup>2</sup> |
| Hall                           | 9.8 m <sup>2</sup>  |
| Kitchen                        | 6.7 m <sup>2</sup>  |
| Living/Dining                  | 22.2 m <sup>2</sup> |
| Storage                        | 1.8 m <sup>2</sup>  |
| Storage/Shelving               | 0.7 m <sup>2</sup>  |
| Utility/HIU                    | 1.7 m <sup>2</sup>  |
| WC                             | 1.9 m <sup>2</sup>  |

KEY PLAN  
Kenbury Street

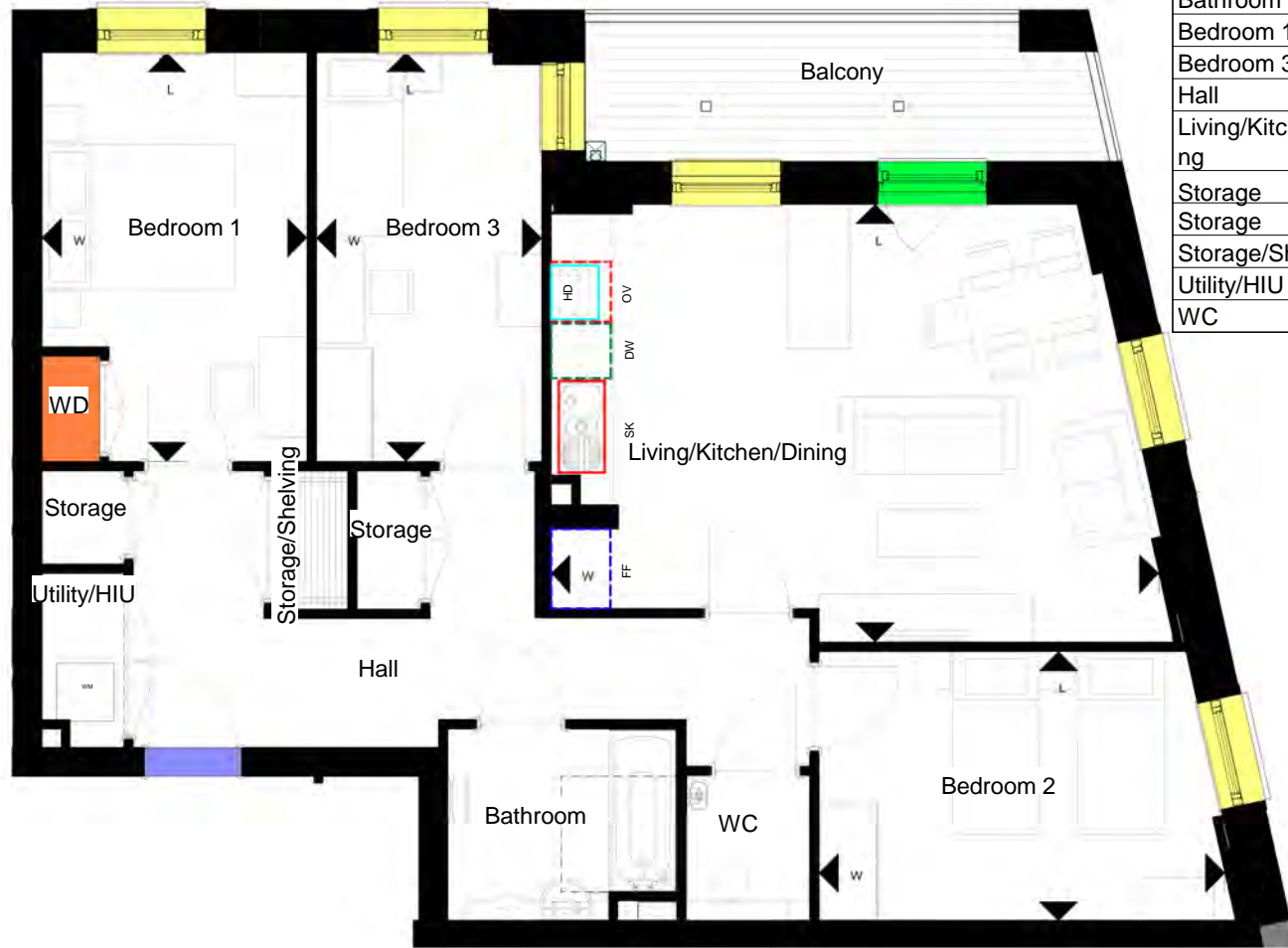


Courtyard

# A3502 - 3 Bedroom 5 Person Home (Open Kitchen)

Levels 02, 03, 04

1 No. Units / Area: 87.4 sqm



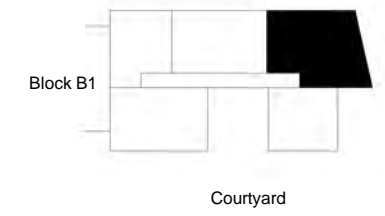
| Dwelling Type A3502 Room Areas |                     |
|--------------------------------|---------------------|
| Name                           | Area Achieved       |
| Balcony                        | 8.3 m <sup>2</sup>  |
| Bathroom                       | 4.7 m <sup>2</sup>  |
| Bedroom 1                      | 10.9 m <sup>2</sup> |
| Bedroom 3                      | 9.9 m <sup>2</sup>  |
| Hall                           | 12.6 m <sup>2</sup> |
| Living/Kitchen/Dining          | 26.4 m <sup>2</sup> |
| Storage                        | 0.8 m <sup>2</sup>  |
| Storage                        | 1.0 m <sup>2</sup>  |
| Storage/Shelving               | 1.1 m <sup>2</sup>  |
| Utility/HIU                    | 1.5 m <sup>2</sup>  |
| WC                             | 1.9 m <sup>2</sup>  |

- Window
- Balcony Door
- Apartment Entrance Door
- Built-In Wardrobe
- Closed Wall to Kitchen
- 650mm Space provision for fridge/freezer (FF)
- 600mm Space provision via removeable base unit for dish washer (DW)
- Space provision via utility cupboards for washing machine (WM)
- 620mm Space provision for oven/hob (OV)
- Hood installed over space for oven/hob (HD)
- Sink, basin & tap installed (SK)
- W  
Dimensions Reference Point  
W - Width  
L - Length

| Dwelling Type A3502 Room Dimensions |       |        |
|-------------------------------------|-------|--------|
| Room Name                           | Width | Length |
| Bedroom 1                           | 2.8   | 4.3    |
| Bedroom 3                           | 2.3   | 4.3    |
| Living Kitchen Dining               | 6.3   | 4.5    |

## KEY PLAN

Kenbury Street





# A3503 - 3 Bedroom 5 Person Home (Open Kitchen)

Level 05

1 No. Units

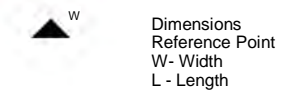
Area: 93.3 sqm



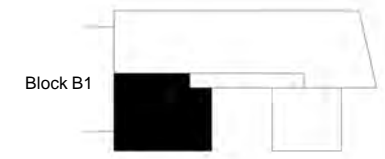
| Dwelling Type A3503 Room... |       |        |
|-----------------------------|-------|--------|
| Room Name                   | Width | Length |
| Living Kitchen Dining       | 4.3   | 7.5    |
| Bedroom 1                   | 3.8   | 4.0    |
| Bedroom 2                   | 3.1   | 4.0    |
| Bedroom 3                   | 2.8   | 3.9    |

| Dwelling Type A3503 Room Areas |               |
|--------------------------------|---------------|
| Name                           | Area Achieved |
| Balcony                        | 8.4 m²        |
| Bathroom                       | 4.4 m²        |
| Bedroom 1                      | 14.6 m²       |
| Bedroom 2                      | 12.1 m²       |
| Bedroom 3                      | 9.8 m²        |
| Hall                           | 12.2 m²       |
| HIU/Utility                    | 1.5 m²        |
| Living Room                    | 28.8 m²       |
| Storage                        | 1.0 m²        |
| Storage                        | 1.8 m²        |
| WC                             | 1.3 m²        |
| WD                             | 0.8 m²        |

- Window
- Balcony Door
- Apartment Entrance Door
- Built-In Wardrobe
- Closed Wall to Kitchen
- 650mm Space provision for fridge/freezer (FF)
- 600mm Space provision via removable base unit for dish washer (DW)
- Space provision via utility cupboards for washing machine (WM)
- 620mm Space provision for oven/hob (OV)
- Hood installed over space for oven/hob (HD)
- Sink, basin & tap installed (SK)



KEY PLAN  
Kenbury Street



# A3503 - 3 Bedroom 5 Person Home (Closed Kitchen)

Levels 01

1 No. Units

Area: 86.7 sqm



| Dwelling Type A3503 Room |                     |
|--------------------------|---------------------|
| Name                     | Area Achieved       |
| Balcony                  | 8.4 m <sup>2</sup>  |
| Bathroom                 | 4.4 m <sup>2</sup>  |
| Bedroom 1                | 14.6 m <sup>2</sup> |
| Bedroom 2                | 12.1 m <sup>2</sup> |
| Bedroom 3                | 9.8 m <sup>2</sup>  |
| Hall                     | 12.2 m <sup>2</sup> |
| HIU/Utility              | 1.5 m <sup>2</sup>  |
| Kitchen                  | 8.6 m <sup>2</sup>  |
| Living Room              | 19.8 m <sup>2</sup> |
| Storage                  | 1.0 m <sup>2</sup>  |
| Storage                  | 1.8 m <sup>2</sup>  |
| WC                       | 1.3 m <sup>2</sup>  |
| WD                       | 0.8 m <sup>2</sup>  |

- Window
- Balcony Door
- Apartment Entrance Door
- Built-In Wardrobe
- Closed Wall to Kitchen
- 650mm Space provision for fridge/freezer  
FF
- 600mm Space provision via removeable base unit for dish washer  
DW
- Space provision via utility cupboards for washing machine  
WM
- 620mm Space provision for oven/hob  
OV
- Hood installed over space for oven/hob  
HD
- Sink, basin & tap installed  
SK

Dimensions Reference Point  
W - Width  
L - Length

| Dwelling Type A3503 Room Dimensions |       |        |
|-------------------------------------|-------|--------|
| Room Name                           | Width | Length |
| Living Dining                       | 4.3   | 4.6    |
| Bedroom 1                           | 3.8   | 4.0    |
| Bedroom 2                           | 3.1   | 4.0    |
| Bedroom 3                           | 2.8   | 3.9    |
| Kitchen                             | 3.2   | 2.8    |

KEY PLAN  
Kenbury Street



Courtyard

# Timeline Phase 1

|                       |  |
|-----------------------|--|
| <b>Spring '24</b>     | Phase 1 construction begins                                  |
| <b>January '25</b>    | Resident event, home layouts and preferences                 |
| <b>Feb/Mar '25</b>    | Allocation of homes  |
| <b>Mar/April '25</b>  | Resident choices - kitchens, colours, flooring and bathrooms |
| <b>Spring '25</b>     | Cost of living event   |
| <b>Autumn '25</b>     | Resident viewings  |
| <b>Winter '25/'26</b> | Residents move in.   |





# Riverside's commitment to residents

- Rent levels will remain for each size property (subject to annual inflation).
- You will receive a home loss payment of £8100, this is set by the government and reviewed annually.
- Riverside will arrange removals for you and will provide a disturbance payment, this is agreed individually with each household.
- A packing and wrapping service will be provided for those who need it.
- We will provide skip days to get rid of unwanted bulky items.



**Please remember to complete your feedback form before you leave.**