

REGENERATION UPDATE

AT JUNIPER CRESCENT

FEBRUARY 2022

JOIN THE SPRING DESIGN MONTH!

We are **relaunching** the regeneration discussion for Juniper Crescent this **Spring 2022!**

The regeneration aims to create comfortable, efficient and affordable homes for all residents. Based on your feedback we have new floorplans and designs that we want to shape with you, to make sure your home is right for you!

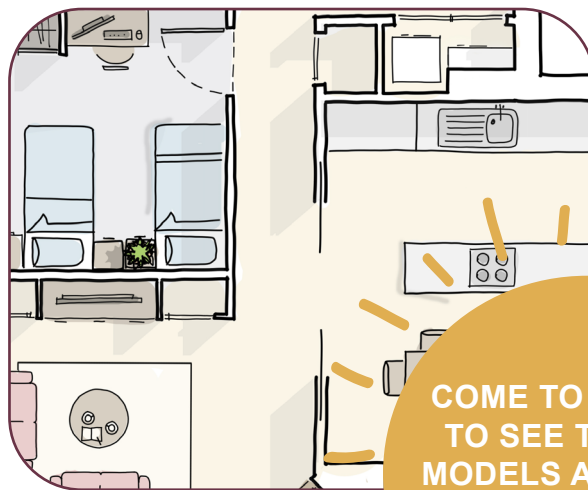
SAVE THE DATE COMMUNITY LAUNCH EVENT

MUSIC, FOOD, DRINKS &
ACTIVITIES
**26 FEB, 12 - 3PM @
JUNIPER CRESCENT
GREEN**

WHAT'S NEW AT THE HUB?



THE RESIDENT HUB



COME TO THE HUB
TO SEE THE NEW
MODELS AND HOME
LAYOUTS FOR YOU TO
FEEDBACK ON!



SPECIALISTS
TO TALK TO YOU
ABOUT KEEPING
YOUR NEW HOME
AFFORDABLE FOR
YOU!

WHAT'S NEW?

WE HAVE NEW IDEAS TO SHARE WITH YOU

Residents have said they want to see new and improved designs for regeneration. This meant a revised masterplan that better reflected your shared feedback and ideas.

Before we redesign a new masterplan for the neighbourhood, we would like to work together to design the new homes first. Throughout the Spring, our focus will be to design the new home that is right for you. This would mean that by Summer, we will be able to present a new masterplan of the entire estate that


better captures residents' requirements. This new masterplan will also ensure we build on what residents liked and wanted in the previous masterplan shown in 2020.

Come and see what a new home for you could look like, and help us shape the designs together so that it becomes the ideal home that suits your needs.

From the feedback provided by residents, we have appointed achitecture firm PRP to work on improving the previous proposals of the new homes for residents.

This has of course been guided by ongoing discussions with residents, telling us clearly what is most important to achieve in a world that now feels a little different for everyone.

This has been done by looking at all the things you have told us!



WE ARE EXCITED TO SHARE FRESH IDEAS WITH YOU!



NEW - A PLACE THAT SUPPORTS DIFFERENT LIFESTYLES AND ADAPTS TO CHANGING NEEDS AND FAMILY STRUCTURES



NEW - SPACES DESIGNED TO WORK FROM HOME



NEW - FLEXIBLE HOME LAYOUTS



NEW - LARGER PRIVATE SPACES



FULLY ACCESSIBLE HOMES

WE WANT TO WORK WITH RESIDENTS TO PROGRESS THEIR IDEAS FOR NEW HOMES NOW, SO THAT BY THE SUMMER WE CAN UNVEIL A PLAN FOR REGENERATION THAT RESIDENTS HAVE CONTRIBUTED TO AND FEEL PART OF

FIND OUT HOW YOU CAN SHAPE THE NEW HOMES AT THE HUB

----->

NEW DESIGNS AT THE HUB

WE WANT TO WORK WITH YOU TO SHAPE YOUR NEW HOME!

Pop by to speak to our engagement team about the new design plans. You can chat to Marina, Mike, Soundous, Sasha & Briony. **NO BOOKING NEEDED.**



Marina Cox



Mike Akwei



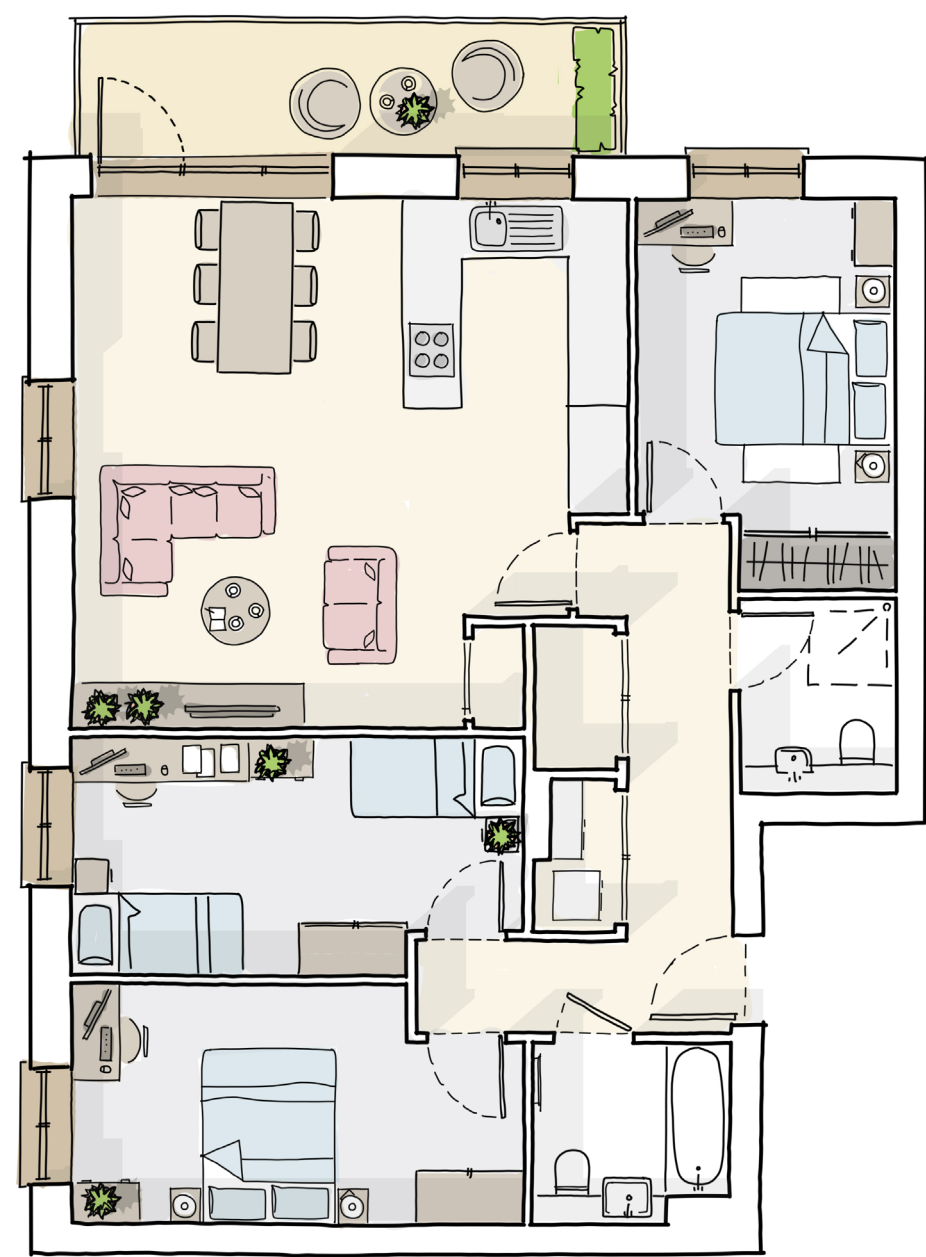
Soundous Serroukh



Sasha Grant



Briony Rogers



THERE IS A NEW HOME PLAN FOR EVERY RESIDENT, COME AND SEE YOURS!

WE HAVE NEW HOME LAYOUTS RESIDENT SO THAT YOU CAN TELL US WHAT YOU THINK ABOUT ALL THE NEW AND IMPROVED FEATURES – WE WANT TO KNOW HOW YOU WOULD LIKE TO SEE THINGS WORK IN YOUR NEW HOME



THE HOMES ARE BEING DESIGNED TO ENSURE THAT JUNIPER CRESCENT REMAINS AFFORDABLE FOR RESIDENTS BOTH NOW AND IN THE FUTURE. FIND OUT HOW ON 12TH MARCH.

HOW TO GET INVOLVED

SPEAK TO THE TEAM THROUGHOUT DESIGN MONTH



HUB IS OPEN FROM 28 FEB TO 26 MARCH

SAVE THE DATE

LAUNCH DAY!
We will be holding a community event on Juniper Crescent Green to launch design month. Expect music, lots of delicious food & drinks, and children-friendly creative activities.
SATURDAY 26 FEB 12PM - 3PM FREE OF CHARGE

TUE	WED	THU	FRI	SATURDAY
DROP-IN 12PM - 5PM NO BOOKING REQUIRED	DROP-IN 12PM - 5PM NO BOOKING REQUIRED	DROP-IN 12PM - 5PM NO BOOKING REQUIRED	DROP-IN 12PM - 5PM NO BOOKING REQUIRED	DROP-IN & COMMUNITY KITCHEN 12PM - 3PM WE'LL HAVE DIFFERENT FOOD EVERY WEEK
Do you work late and want to speak to us at a different time? Email to arrange an alternative time on junipercrescent@onehousing.co.uk				



FOCUS SESSIONS

***7 - 19 MARCH**
In addition to the drop-ins, we will be inviting you to come along to our dedicated focus sessions which we are holding on selected evenings to design and discuss specific home types with you. This gives you the opportunity to chat with the architects, developer, and engagement team.
Look out for your invitation which we will post to you in the next few weeks.

COMMUNITY KITCHEN

SATURDAYS!
We'll be celebrating local food cultures through the month so come down to the hub on Saturday afternoons (12 - 3PM) for your free portion.
All left-over food will be donated locally!

MONEY MATTERS

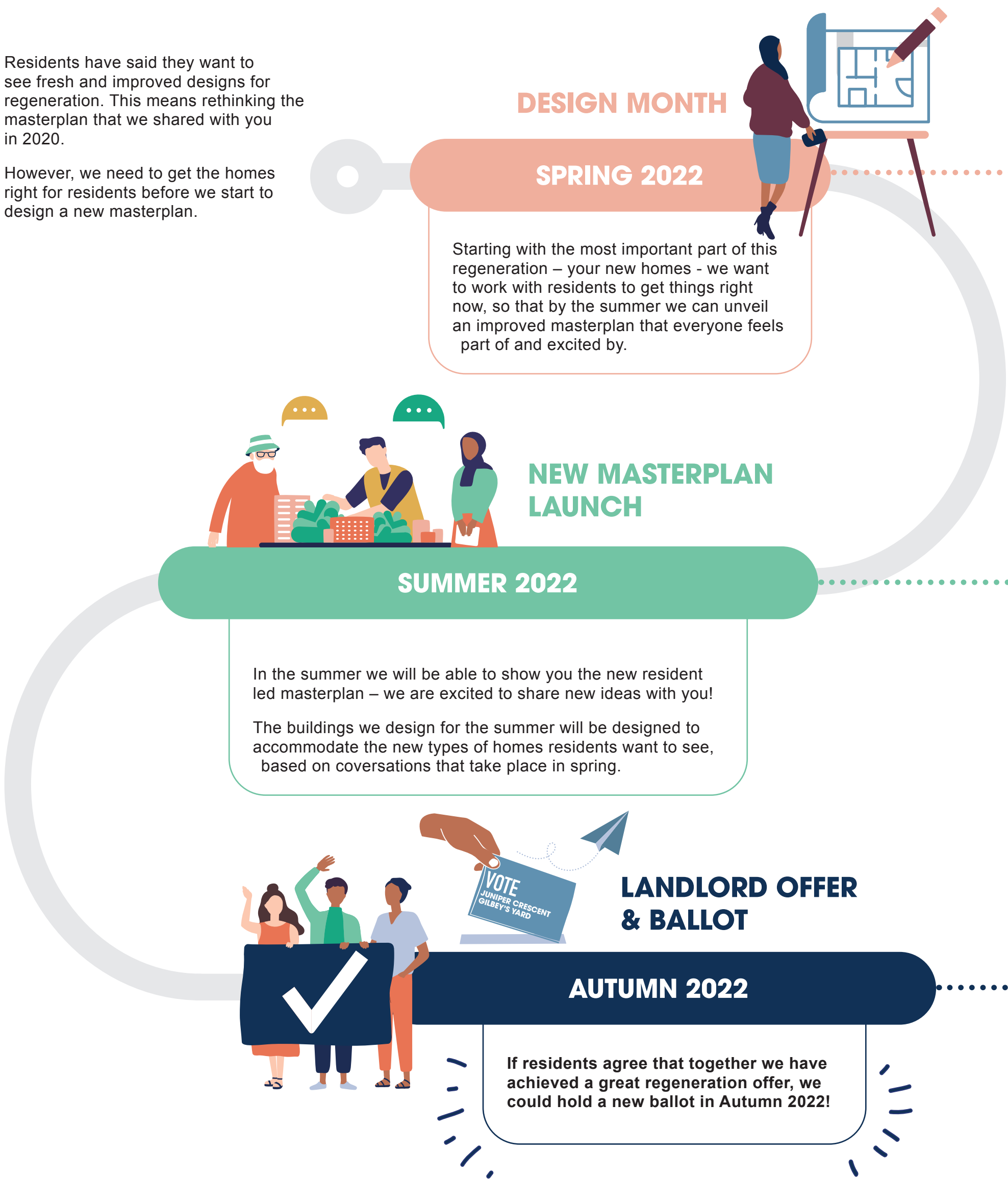
WORKSHOP SESSIONS ON KEEPING YOUR NEW HOME AFFORDABLE
MONDAY 21 MARCH: 10am - 12pm
6 - 8pm
SATURDAY 26 MARCH: 10am - 12pm

RESIDENT LED REGENERATION

HOW WE WILL ACHIEVE THIS TOGETHER

Residents have said they want to see fresh and improved designs for regeneration. This means rethinking the masterplan that we shared with you in 2020.

However, we need to get the homes right for residents before we start to design a new masterplan.



RESIDENT COMMITMENTS

WHAT WE WILL ACHIEVE & WHEN



CELEBRATE LOCAL

COME ALONG TO OUR UPCOMING EVENTS

LAUNCH DAY! SATURDAY 26 FEB, 12 - 3PM

Come out and see us at Juniper Crescent green on Saturday 26th February where we will be holding a community event to launch the design month.

Expect music, lots of delicious food & drinks, and child-friendly creative activities.

FREE OF CHARGE

COMMUNITY KITCHEN, SATURDAYS IN MARCH 12 - 3PM

We'll be celebrating local food cultures through the month so come down to the engagement hub on Saturday afternoon for your free portion.



ALL LEFTOVER FOOD
WILL BE DONATED TO A
LOCAL CHARITY

CONTACT US

You can get in touch with the engagement team by emailing us at:

JUNIPERCRESCENT@ONEHOUSING.CO.UK

THE TEAMS INVOLVED

As you know, One Housing have been working with you and the surrounding businesses on developing a vision for both Juniper Crescent and Gilbeys Yard since 2017. We are passionate about creating places that are comfortable and safe for everyone to live in and enjoy!

At this stage of the redevelopment, we are supported by a team of specialists who are committed in developing the vision with you!

One Housing

Working in partnership with Countryside they are responsible for managing the estates.

Countryside

Working in partnership with One Housing they were chosen by One Housing and a select panel of residents as a development partner.

PRP Architects

Architectural firm appointed to design the new homes and masterplan

Soundings

Independent resident and community engagement consultants

Communities First

Independent resident advisors.

Would you like this invitation translated?

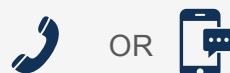


অনুবাদ করা? 번역? மொழிபெயர்ப்பா?

ترجمة? অনুবাদ?

¿Traducción? Tarjumaad?

Werger? Tradução?



079666 43082

JUNIPERCRESCENT@ONEHOUSING.CO.UK



One Housing

Part of
Riverside

COUNTRYSIDE
Places People Love

FEBRUARY 2022