

# *Your* **Riverside**



Your local update – Spring 2025

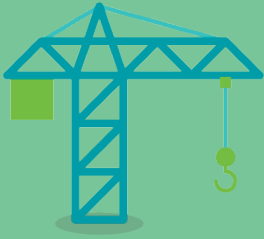
## The regeneration of Pike Close Your Spring 2025 newsletter

### Welcome

Take a look at the latest progress on the regeneration of Pike Close and find out more about upcoming engagement activities. For regular updates, you can also visit our webpage at [www.riverside.org.uk/pike](http://www.riverside.org.uk/pike)



# 1 Construction progress



We were excited to take handover of Samara House, the first new block at Pike Close, delivering 29 high-quality homes for existing residents. This is a major milestone for everyone involved.

Ahead of the handover, we invited residents to visit their future homes and start planning for their move. Seeing their new homes in person was a truly special moment for everyone involved. This is an exciting time for the community, and we want to thank our Pike Close residents for their patience and cooperation from the early consultation stages to today.

# 2 The Facebook Group



The Pike Close Facebook group was originally created for consultation and engagement on the ballot and regeneration plans. As these plans have been approved, we will be closing the group soon.

You can still reach Riverside through our main Facebook page for housing and repair issues, and we will continue to share updates with you via our newsletter and on our website. For any regeneration-related queries, you can contact the team by email or phone, or speak with your Independent Tenant Advisors, Source.

Your Resident Liaison Officer and Independent Tenant Advisors will continue to hold regular drop-in sessions on the estate to address any ongoing concerns.

# 3 Next surgeries



The next drop-in surgery with your Resident Liaison Officer, Jade Adnett and your Senior Development Manager, Robin Matthews is on **Thursday 1 May (1.15pm-3.15pm)** at Countryside's site office/canteen on the ground floor.

Your Independent Tenant Advisors, Source, is on the estate on **Tuesday 17 June (4pm-6pm)**.

## 4 Resident engagement



We've been busy working with residents in phase one to support their move to Samara House. Home demonstrations have been held with individual households to help them understand how to use the equipment in their new homes. Residents have started booking their moving dates, with the first moves scheduled to begin the week of 22 April.

Next month, we will be hosting an estate-wide event with Countryside to share the construction plan for phase two. This will include details on the planned demolition of Mede and Wells House, which will take place once both blocks have been vacated.

## 5 Meet Sheridan



We're pleased to introduce Sheridan Sheahan, the new Social Value Manager at Countryside. Sheridan brings over 12 years of experience to the role, having worked for HS2 and St George previously. She'll be leading social value initiatives at Pike Close this year, shaped by the feedback you've shared.

Sheridan will be developing a plan based on the input received at last summer's social value event. We look forward to sharing more details with you in the coming months.

## 6 Find local activities with Simply Connect Bromley



Simply Connect Bromley makes it easy to find local groups and activities, both free and paid. There's something for everyone, from Bromley Scouts and playgroups to the 60 Up Warm Space and inclusive outings with The Maypole Project.

Visit [Simply Connect Bromley](https://bromley.simplyconnect.uk/) at <https://bromley.simplyconnect.uk/> enter your postcode and see what's on near you. Alternatively, you can call the Simply Connect Bromley on 0208 315 1900.

## 7 Programme timeline

We're committed to keeping life at Pike Close as normal as possible. By working in phases, we can keep the community together and reduce disruption.



With the handover of Samara House complete, residents will shortly begin moving into their new homes. Once everyone from Mede and Wells House has moved out, demolition will begin as part of phase two. The programme timeline remains the same:

**Phase 2 Summer 2025 – Spring 2028**

**Phase 3 Summer 2028 – Spring 2030**

**Phase 4 Summer 2030 – Summer 2031.**

## 8 Stay in touch

We are always happy to hear from you and answer any questions you may have. For more information, please contact:

Jade Adnett, your Resident Liaison Officer

**07980 761482**

**[pikeclose@riverside.org.uk](mailto:pikeclose@riverside.org.uk)**



Carol Squires and Rob Williams, your Independent Tenant Advisors

**0800 616 328**

**[carol@sourcepartnership.com](mailto:carol@sourcepartnership.com)**

**[rob@sourcepartnership.com](mailto:rob@sourcepartnership.com)**

Jack Adkins, your Housing Officer

**0345 111 0000.**

### **Need a repair?**

Report and book repairs quickly and easily with **My Riverside**, either online or via the app, or call **0345 111 0000.**